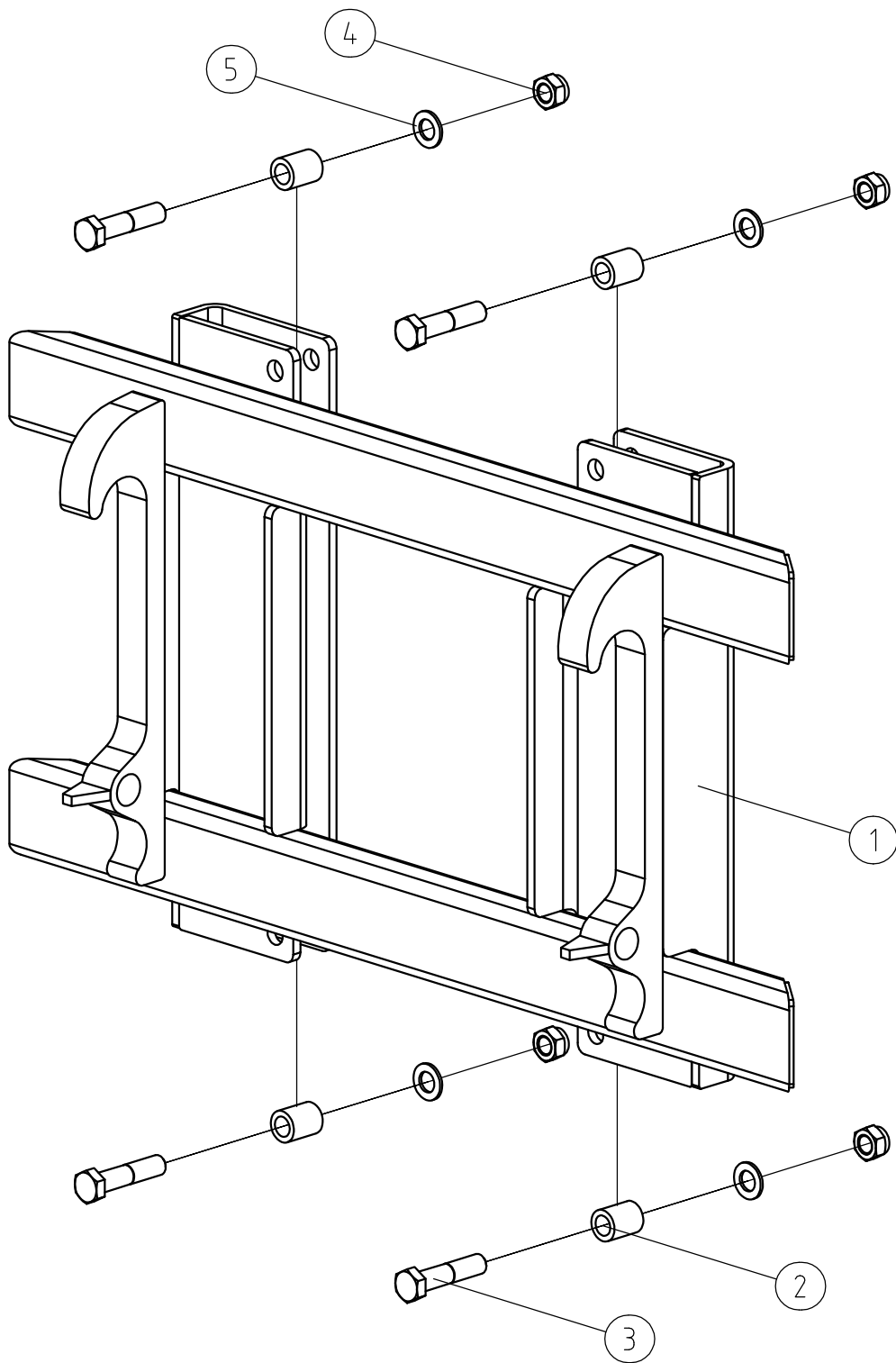


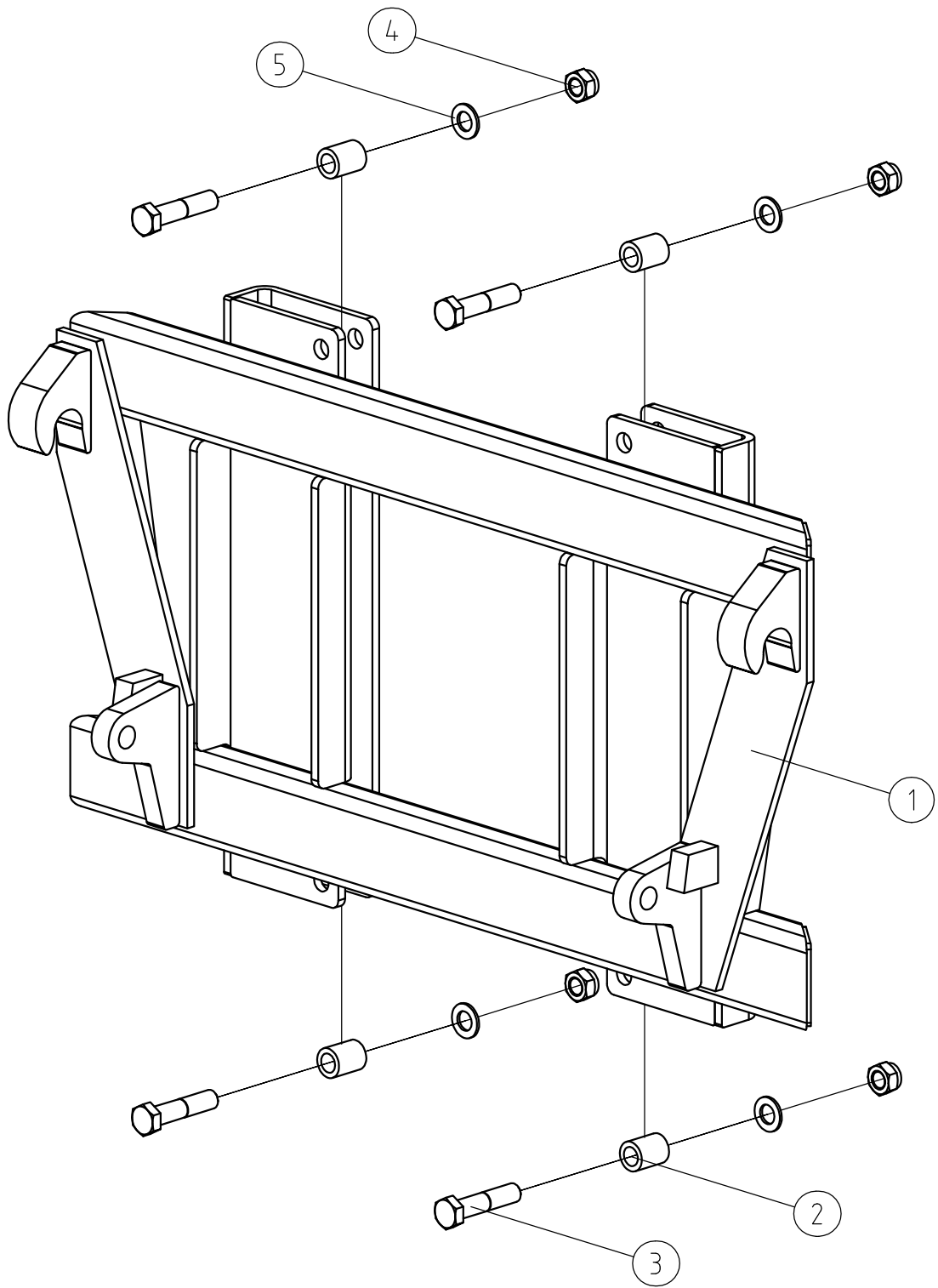
VM32-0

MODEL		VM32-01	VM32-02	VM32-03	VM32-04	
ITEM	QTY DESCR	NAME	NAME	NAME	NAME	STANDARD
1	1	VM32-21	VM32-22	VM32-23	VM32-24	
2	1	VM32-1	VM32-1	VM32-1	VM32-1	
3	1	VM32-2	VM32-2	VM32-2	VM32-2	
4	1	VM32-3	VM32-3	VM32-3	VM32-3	
5	1	VM32-4	VM32-4	VM32-4	VM32-4	
6	2	VM32-5	VM32-5	VM32-5	VM32-5	
7	1 Sheet 5	VM32.00.00.08	VM32.00.00.08	VM32.00.00.08	VM32.00.00.08	
8	1 Side light (right)	2254.01 R	2254.01 R	2254.01 R	2254.01 R	
9	1 Side light (left)	2254.01 L	2254.01 L	2254.01 L	2254.01 L	
10	6 Clamp SPP 10	5302-01-10	5302-01-10	5302-01-10	5302-01-10	
11	10 Bolt	M6 X 20	M6 X 20	M6 X 20	M6 X 20	DIN 933
12	4 Crosshead screw	M6 X 20	M6 X 20	M6 X 20	M6 X 20	ISO 7045
13	14 Nut	M6	M6	M6	M6	DIN 985
14	10 Washer	∅ 6.4	∅ 6.4	∅ 6.4	∅ 6.4	DIN 9021
15	4 Washer	A 6.4	A 6.4	A 6.4	A 6.4	DIN 125
16	8	VM32-6	VM32-6	VM32-6	VM32-6	



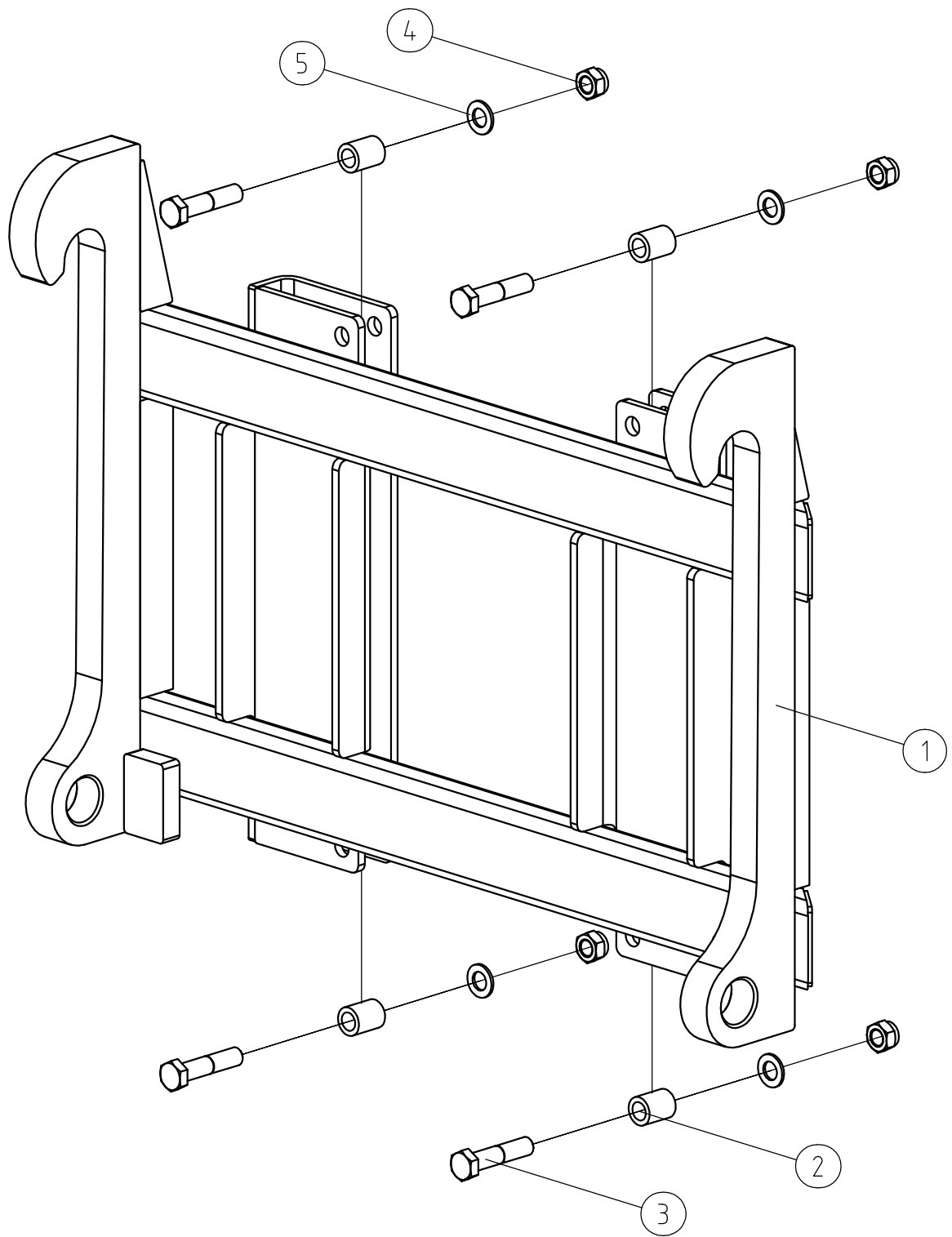
VM32-21

ITEM	QTY	DESCR	NAME	STANDARD
1	1		VM32.21.00.00	
2	4	Pipe ϕ 32x6	VM32.00.00.05	
3	4	Bolt	M20 X 90	DIN 931
4	4	Nut	M20	DIN 985
5	4	Washer	A 21	DIN 125



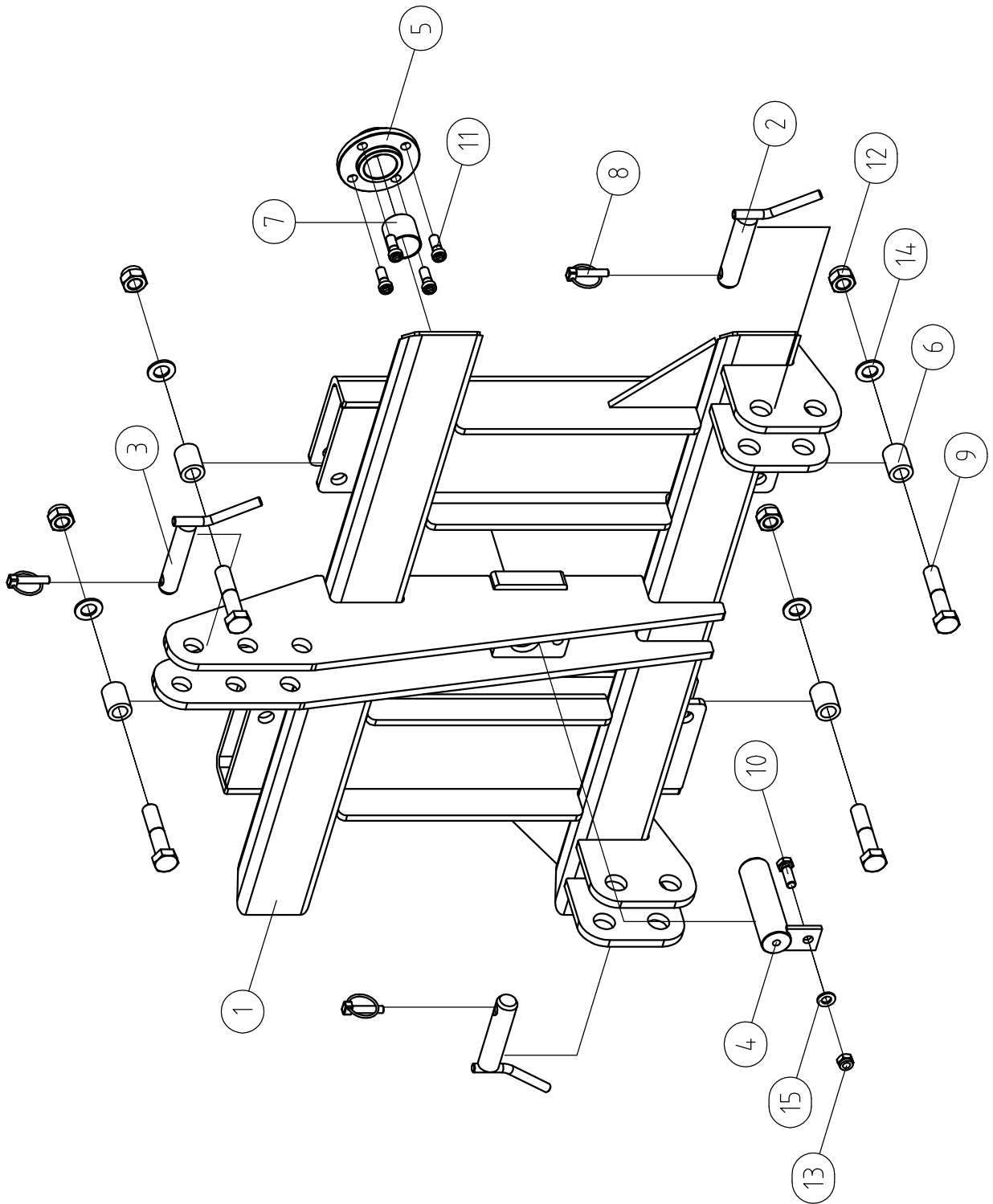
VM32-22

ITEM	QTY	DESCR	NAME	STANDARD
1	1		VM32.22.00.00	
2	4	Pipe ϕ 32x6	VM32.00.00.05	
3	4	Bolt	M20 X 90	DIN 931
4	4	Nut	M20	DIN 985
5	4	Washer	A 21	DIN 125



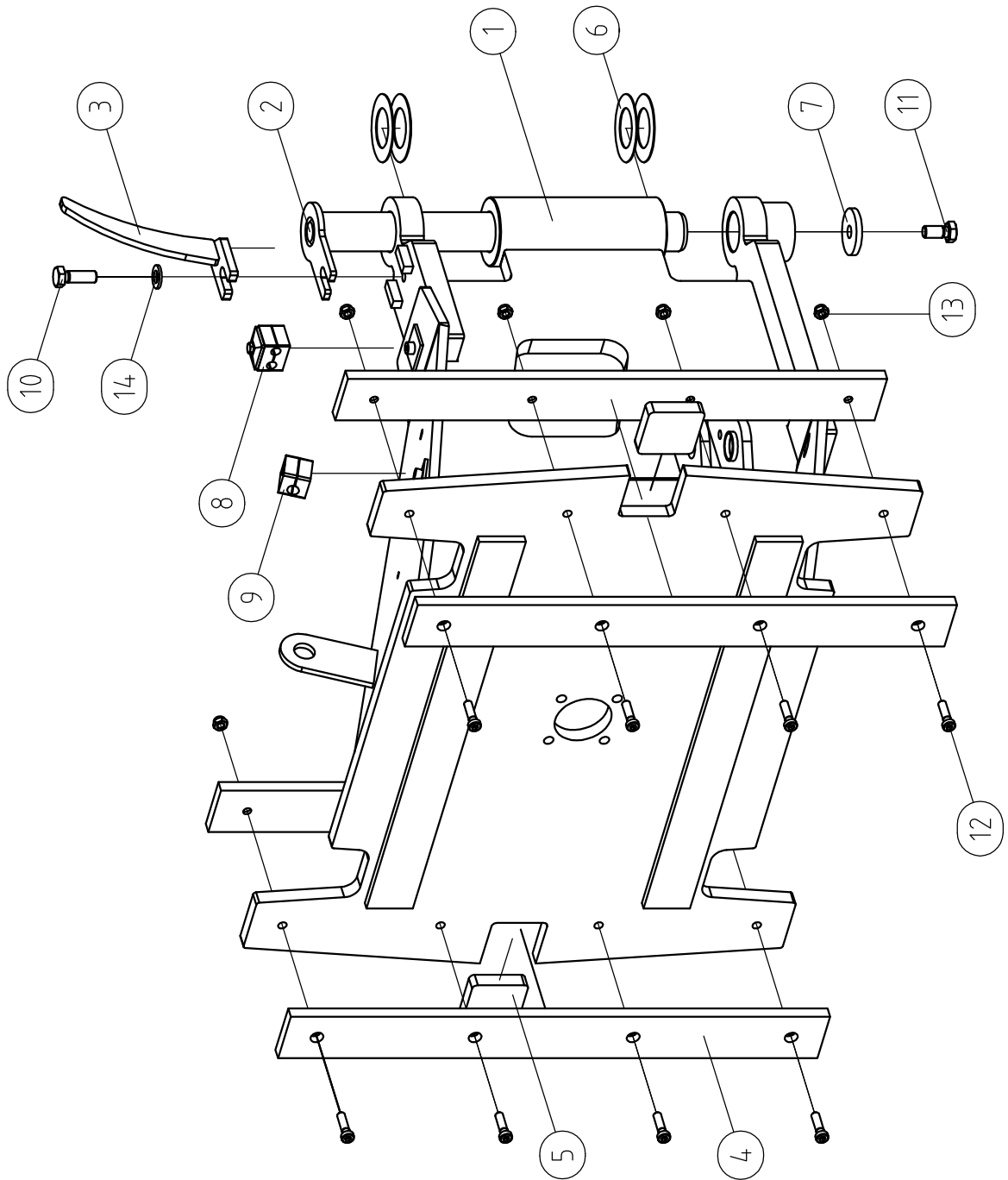
VM32-23

ITEM	QTY	DESCR	NAME	STANDARD
1	1		VM32.23.00.00	
2	4	Pipe ϕ 32x7	VM32.00.00.05	
3	4	Bolt	M20 X 90	DIN 931
4	4	Nut	M20	DIN 985
5	4	Washer	A 21	DIN 125



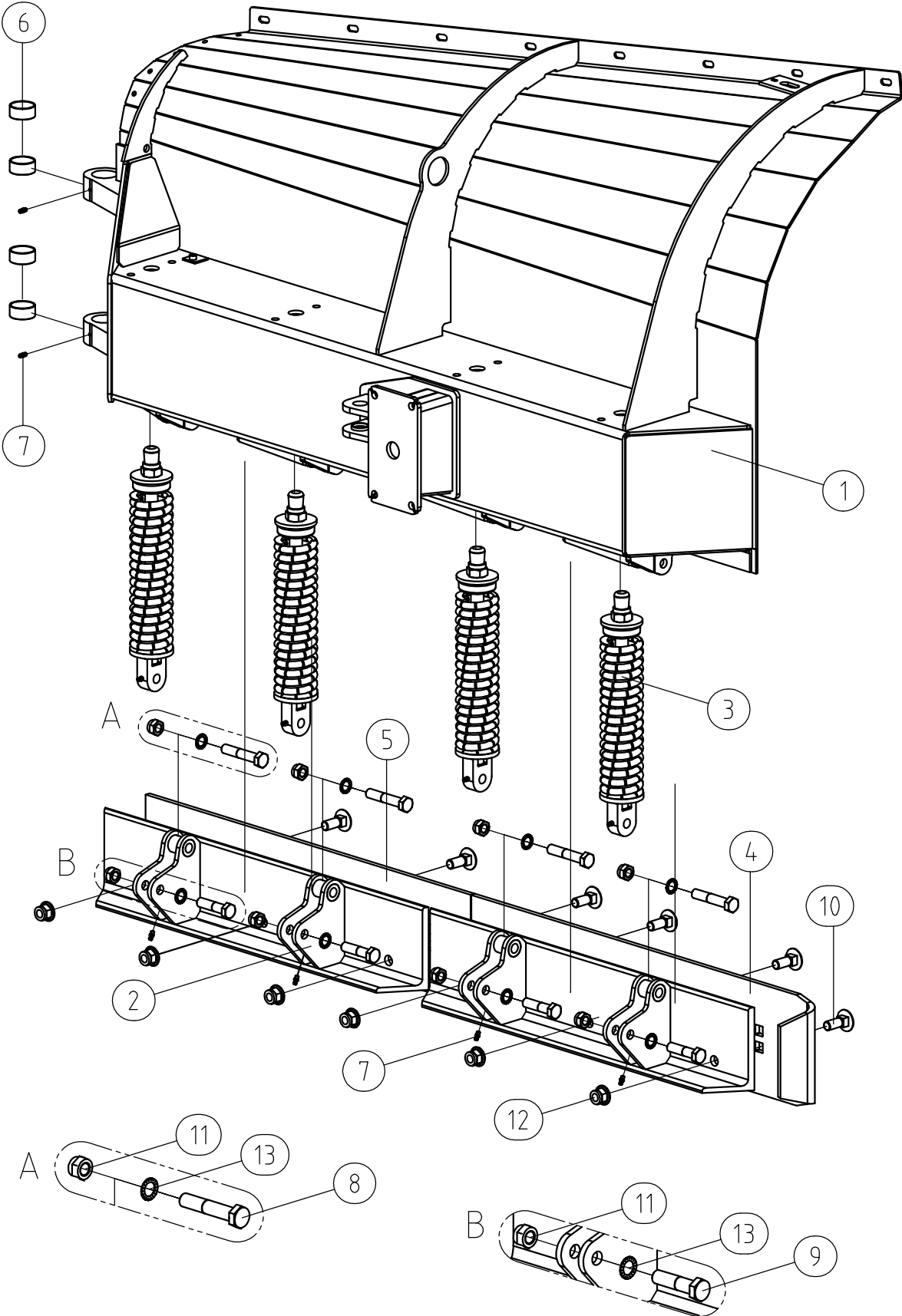
VM32-24

ITEM	QTY	DESCR	NAME	STANDARD
1	1		VM32.24.01.00	
2	2		VM32.24.02.00	
3	1		VM32.24.03.00	
4	1		VM32.24.04.00	
5	1	Round ϕ 110	VM32.24.00.01	
6	4	Pipe ϕ 32x6	VM32.00.00.05	
7	1	Journal bearing BRM-80	404440	Service free
8	3	Finger	LST ϕ 10	DIN11023
9	4	Bolt	M20 X 90	DIN 931
10	1	Bolt	M12 X 35	DIN 933
11	4	Rounded inner xex bolt	M12 X 30	DIN 6912
12	4	Nut	M20	DIN 985
13	1	Nut	M12	DIN 985
14	4	Washer	A 21	DIN 125
15	1	Washer	A 13	DIN 125



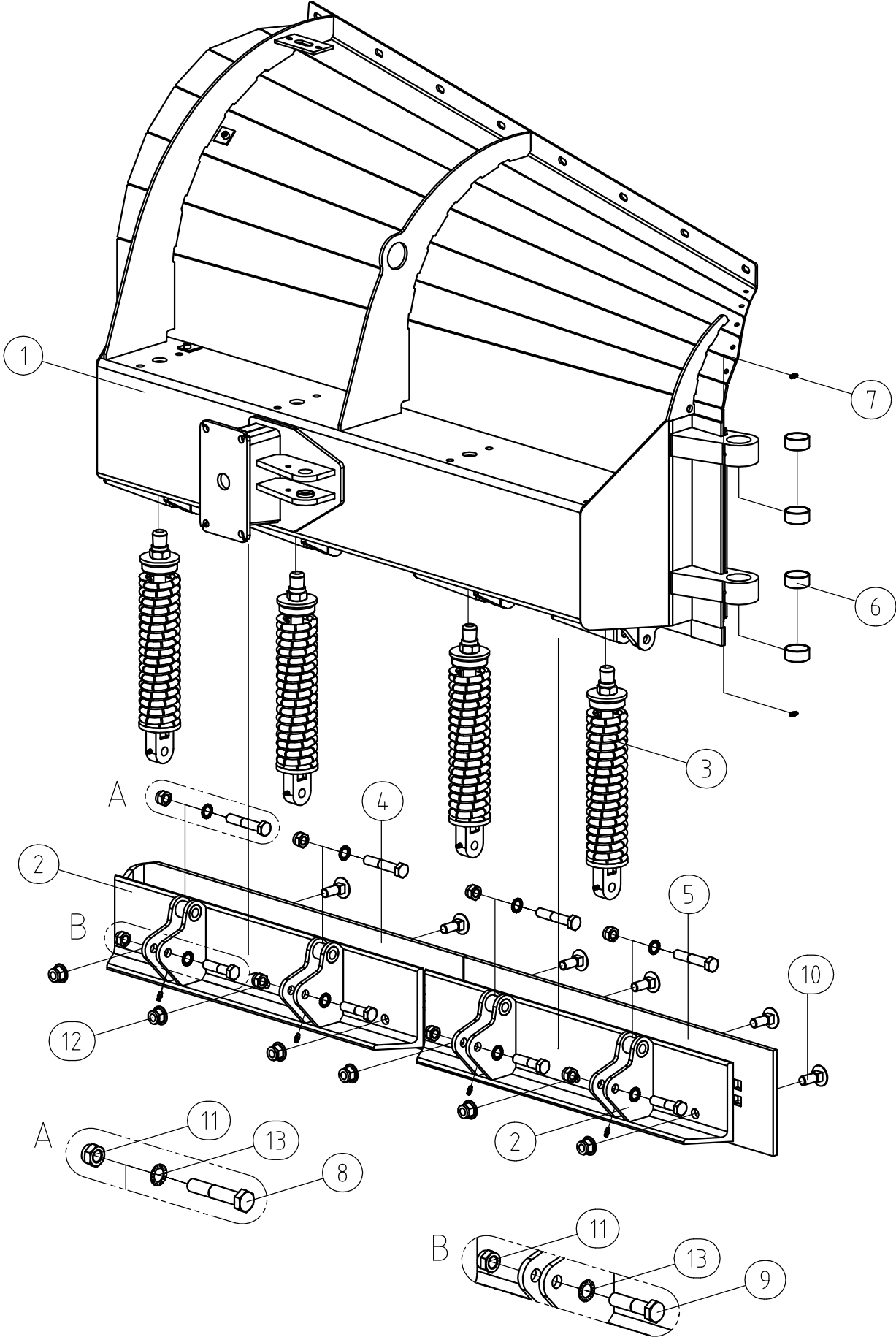
VM32-1

ITEM	QTY	DESCR	NAME	STANDARD
1	1		VM32.02.00.00	
2	1		VM32.05.00.00	
3	1		VM32.09.00.00	
4	4	Plate 10	VM32.00.00.03	
5	2	Sheet 15	VM32.00.00.04	
6	4	Sheet 15	VM32.00.00.06	
7	1	Sheet 5	VM32.00.00.07	
8	1	Double clamp DSP10	5343-01-10	
9	1	Clamp SPP 12	5302-01-12	
10	1	Bolt	M12 X 35	DIN 933
11	1	Bolt	M12 X 25	DIN 933
12	8	Cylinder head hex bolt	M8 X 30	DIN 6912
13	8	Nut	M8	DIN 985
14	1	Washer	A 13	DIN 125



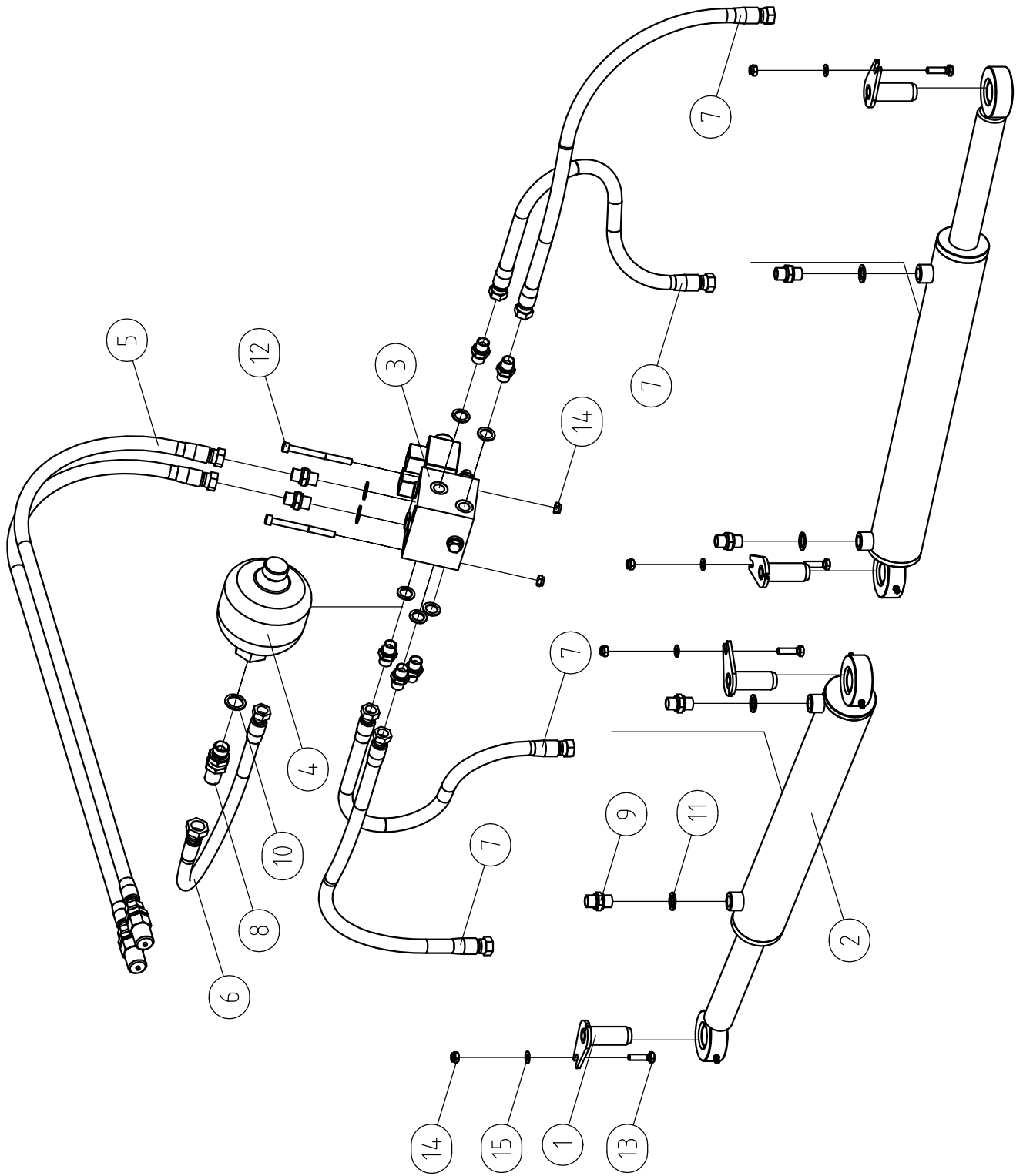
VM32-2

ITEM	QTY	DESCR	NAME	STANDARD
1	1		VM32.03.00.00	
2	2		VM32.06.00.00	
3	4		VM32-6	
4	1	Sheet 10	VM32.00.00.01	
5	1	Sheet 10	VM32.00.00.02	
6	4	Journal bearing BRM-80	404420	
7	6	Grease nipple	AM 6	DIN 71412
8	4	Bolt	M16 X 85	DIN 931
9	4	Bolt	M16 X 65	DIN 931
10	6	Convexhead bolt	M16 X 45	SFS 2458
11	8	Nut	M16	DIN 985
12	6	Nut	M16	DIN 6926
13	8	Locking washer	A 17	DIN 6798



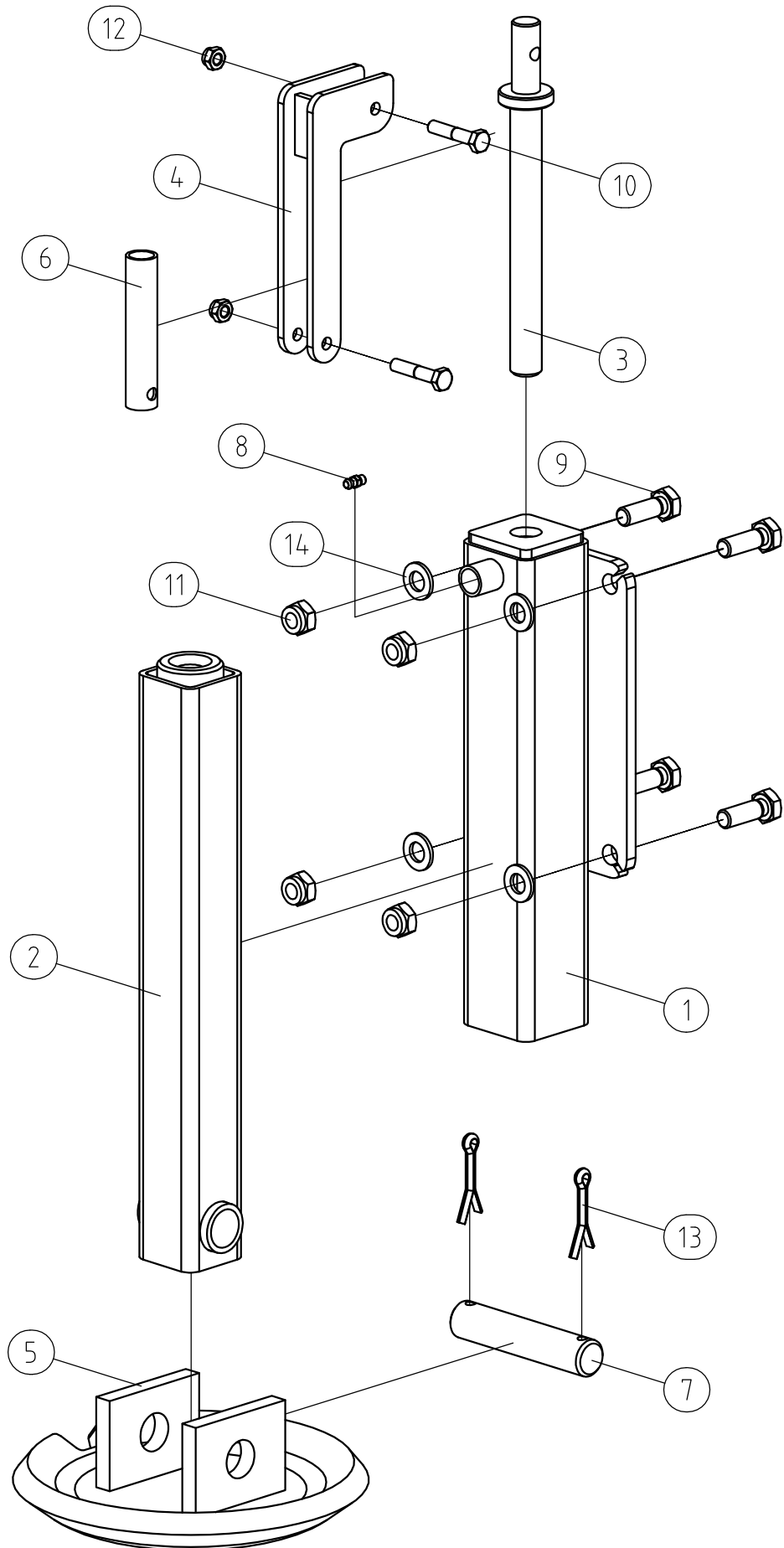
VM32-3

ITEM	QTY	DESCR	NAME	STANDARD
1	1		VM32.04.00.00	
2	2		VM32.06.00.00	
3	4		VM32-6	
4	1	Sheet 10	VM32.00.00.01	
5	1	Sheet 10	VM32.00.00.02	
6	4	Journal bearing BRM-80	404420	
7	6	Grease nipple	AM 6	DIN 71412
8	4	Bolt	M16 X 85	DIN 931
9	4	Bolt	M16 X 65	DIN 931
10	6	Convexhead bolt	M16 X 45	SFS 2458
11	8	Nut	M16	DIN 985
12	6	Nut	M16	DIN 6926
13	8	Locking washer	A 17	DIN 6798



VM32-4

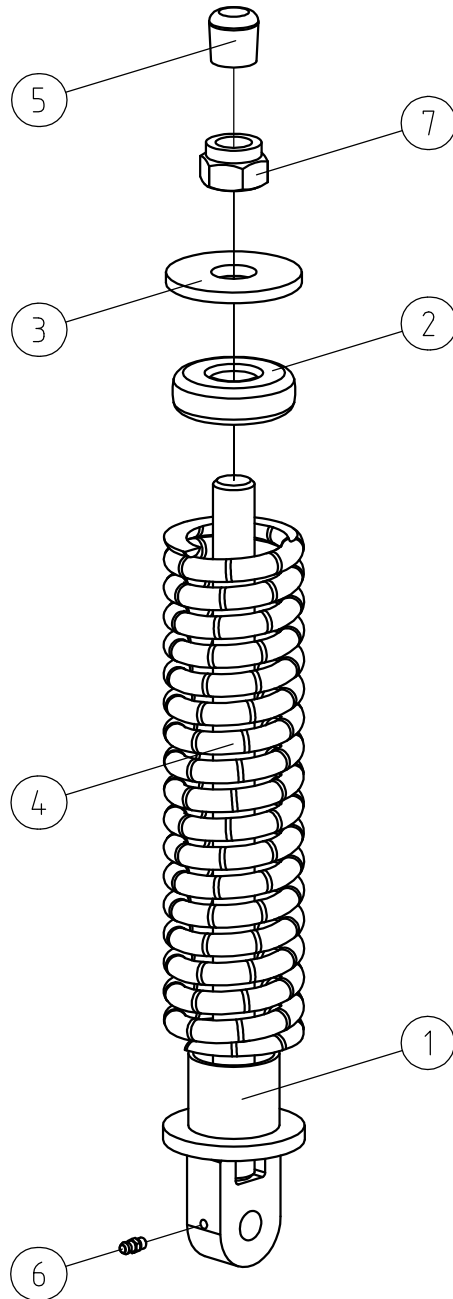
ITEM	QTY	DESCR	NAME	STANDARD
1	4		VM32.10.00.00	
2	2	Hydraulic cylinder	HC63-40-422	
3	1	Divider	VBESH-B-384500-B	
4	1	Acumulator tank	LA 0,75 ECO	
5	2	Hose	G 1/2 F - 3/8 0 FS	L-2400
6	1	Hose	G 1/2 0 FS - 3/8 0 FS	L-500
7	1	Hose	G 3/8 0 FB - G 3/8 0 FB	L-700
7	1	Hose	G 3/8 0 FB - G 3/8 0 FB	L-700
7	1	Hose	G 3/8 0 FB - G 3/8 0 FB	L-700
7	1	Hose	G 3/8 0 FB - G 3/8 0FB	L-700
8	1	Through draw	G1/2-G1/2	7090-08-08
9	11	Adapter	G3/8	700200606
10	1	Hydraulic washer	G1/2	5601-01-08
11	11	Hydraulic washer	G3/8	5601-01-06
12	2	Cylinder head hex nut	M8 X 90	DIN 912
13	4	Bolt	M8 X 30	DIN 933
14	6	Nut	M8	DIN 985
15	4	Washer	A 8.4	DIN 125



VM32-5

ITEM	QTY	DESCR	NAME	STANDARD
1	1		VM32.07.01.00	
2	1		VM32.07.02.00	
3	1		VM32.07.03.00	
4	1		VM32.07.04.00	
5	1		VM32.07.05.00	
6	1	Pipe ϕ 20x2	VM32.07.00.01	
7	1	Round ϕ 24	VM32.07.00.02	
8	1	Grease nipple	AM 6	DIN 71412
9	4	Bolt	M12 X 35	DIN 933
10	2	Bolt	M8 X 40	DIN 931
11	4	Nut	M12	DIN 985
12	2	Nut	M8	DIN 985
13	2	Cotter pin	ϕ 6.3 X 40	DIN 94
14	4	Washer	A 13	DIN 125

VM32-6



VM32-6

ITEM	QTY	DESCR	NAME	STANDARD
1	1		VM32.08.01.00	
2	1		VM32.08.00.01	
3	1	Sheet 6	VM32.08.00.02	
4	1	Pressure spring	12 X 50/74 X 300	SF-TF 6897
5	1	Plastic plug	Ø22 600.32.08.00.99	
6	1	Grease nipple	AM 6	DIN 71412
7	1	Nut	M22	DIN 985