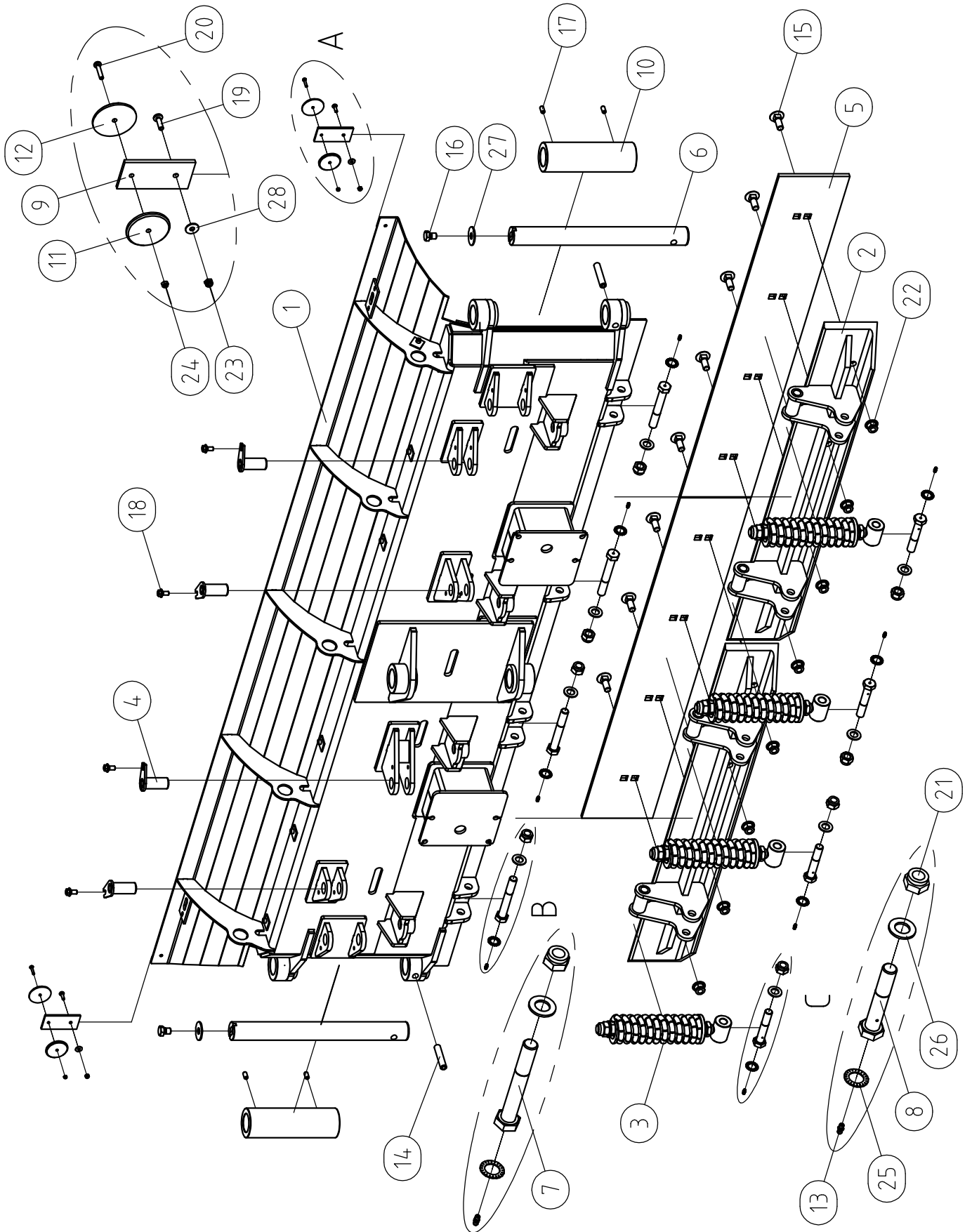


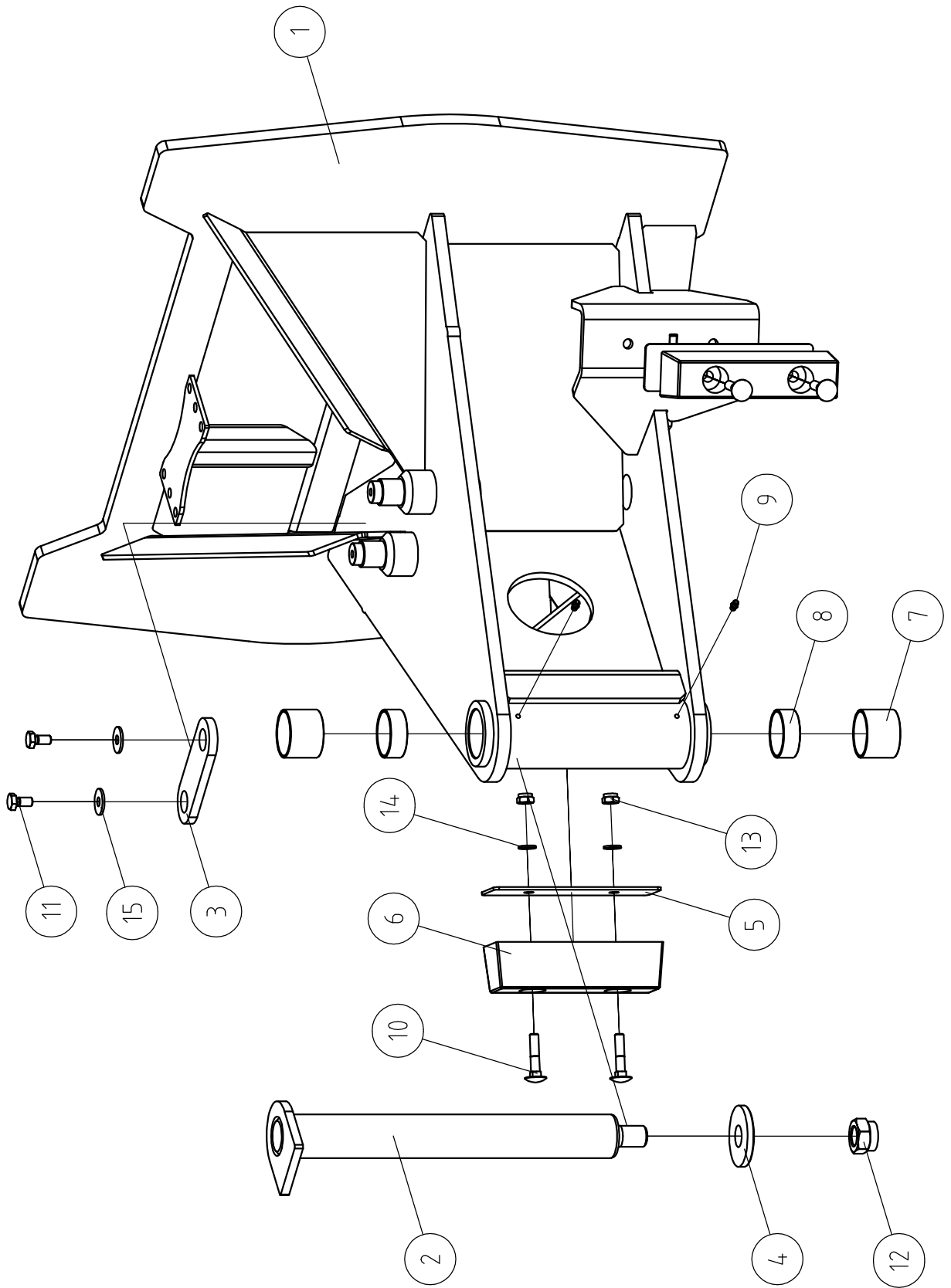
## UM42-0

ITEM	QTY	DESCR	NAME	STANDARD
1	1		UM42-1	
2	1		UM42-2	
3	1		UM42-3	
4	1		UM42-4	
5	2		UM42-5	
6	2		UM42-6	
7	1		UM42-9	
8	1		UM42-10	
9	1		DM32-11	
10	2	Cylinder	HC63-40-414	
11	2	Cylinder	HC70-40-306	



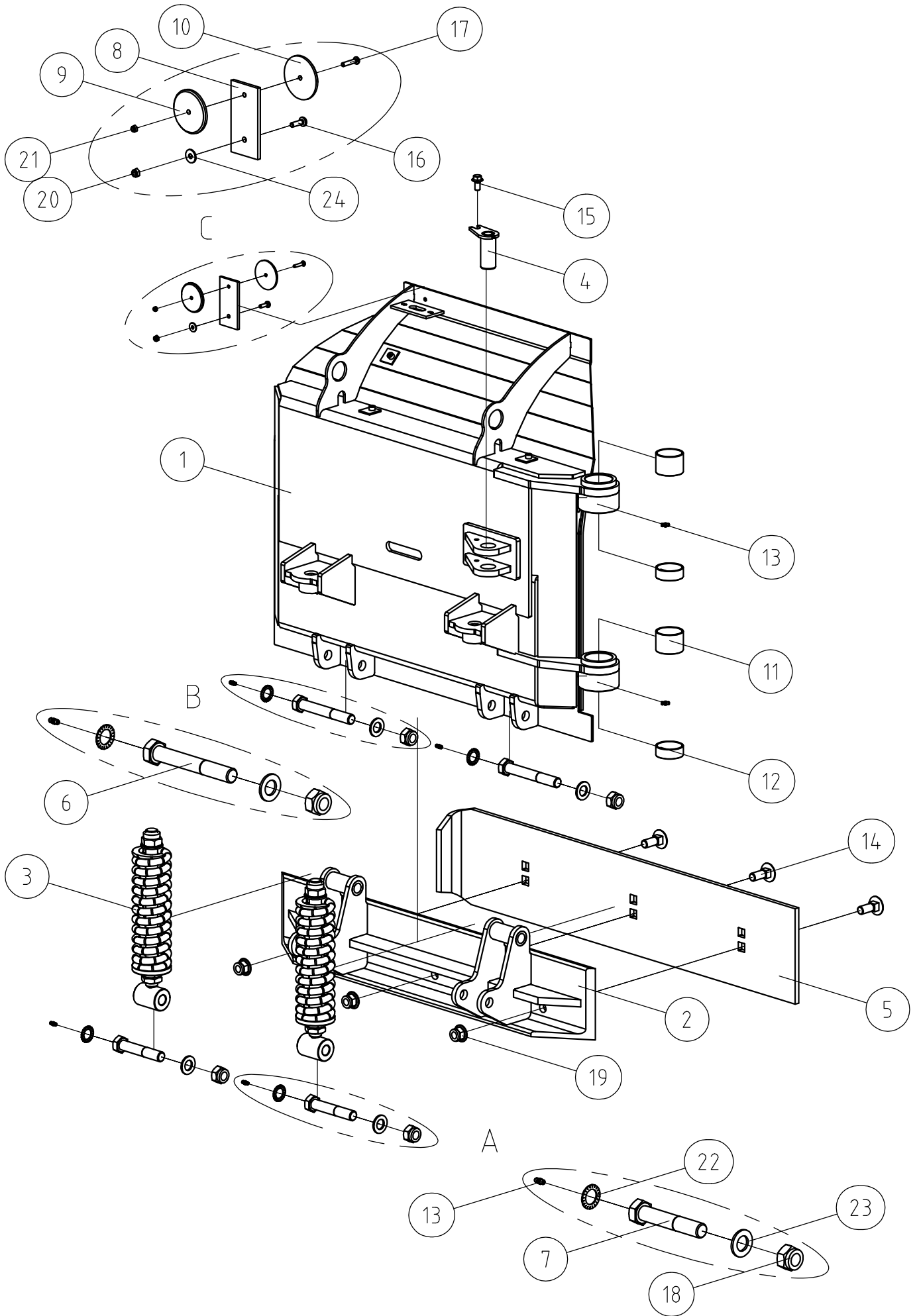
## UM42-1

ITEM	QTY	DESCR	STANDARD
1	1		
2	2		
3	4		
4	4		
5	2	Sheet 10	
6	2	Round ø50 h9	
7	4	Bolt M20x140	
8	4	Bolt M20x110	
9	2	Sheet 5	
10	2	Pipe ø80x15	
11	2	Red round reflector	ABKATI
12	2	White round reflector	ABKATI
13	8	Grease nipple	DIN 71412
14	2	Pipe linchpin	ISO 8752
15	8	Bolt	SFS 2458
16	2	Bolt	DIN 933
17	4	Bolt	DIN 916
18	4	Bolt	DIN 6921
19	2	Crosshead screw	ISO 7045
20	2	Screw	ISO 7045
21	8	Nut	DIN 985
22	8	Nut	DIN 6926
23	2	Nut	DIN 985
24	2	Nut	DIN 985
25	8	Locking washer	DIN 6798
26	8	Washer	DIN 125
27	2	Washer	DIN 9021
28	2	Washer	DIN 9021



UM42-2

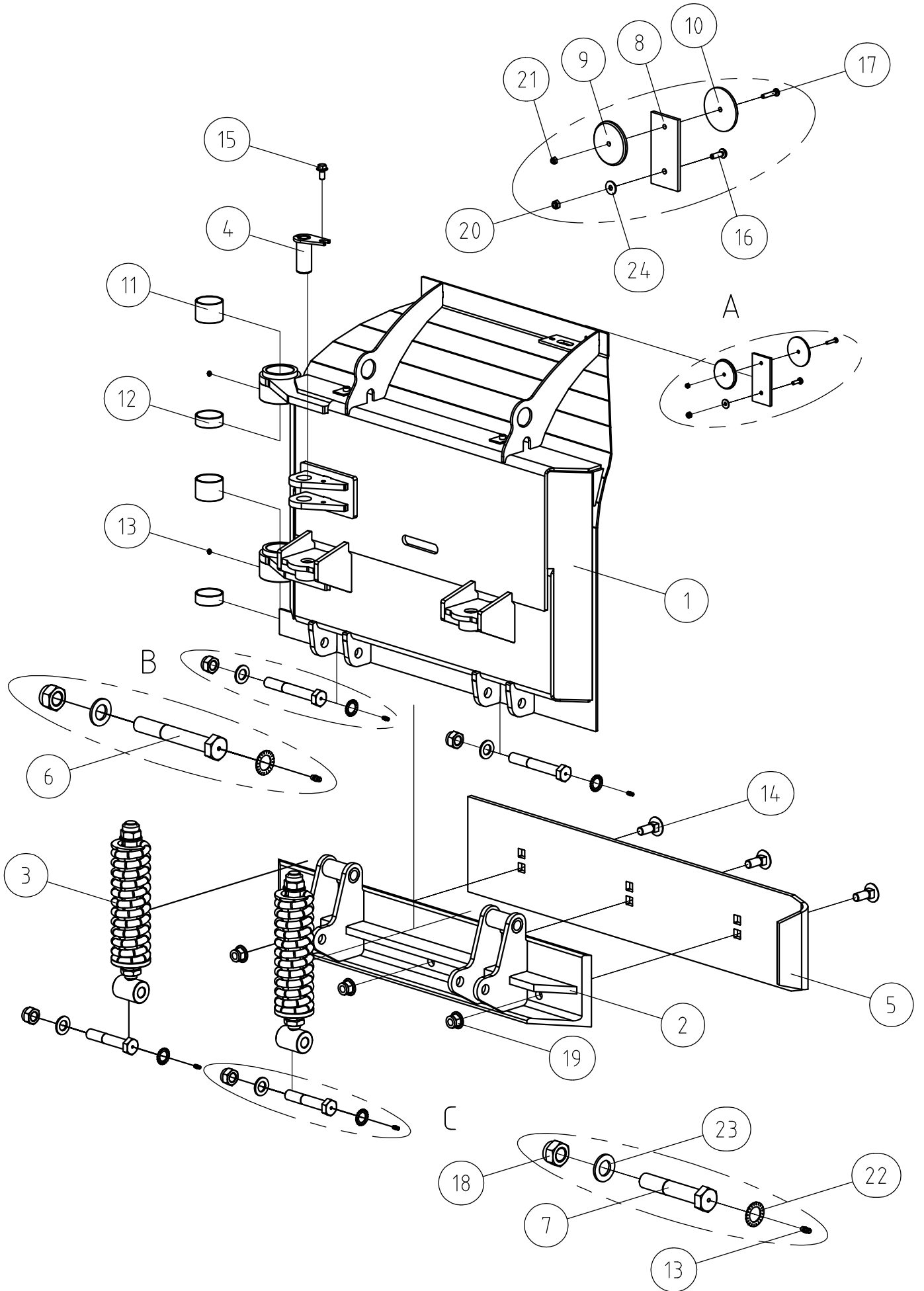
ITEM	QTY	DESCR	NAME	STANDARD
1	1		UM42.02.00.00B	
2	1		UM42.09.00.00B	
3	1	Sheet 10	UM42.00.00.04	
4	1	Sheet 8	UM42.00.00.05	
5	2	Sheet 3	UM42.00.00.06B	
6	2	Rubber support	1108B	
7	2	Bearing BRM 80	P5040	
8	2	Bearing BRM 80	P5020	
9	2	Grease nipple	AM 6	DIN 71412
10	4	Cup Head Sq. Neck Bolt	M10 X 50	DIN 603
11	2	Bolt	M10 X 20	DIN 933
12	1	Nut	M24	DIN 985
13	4	Nut	M10	DIN 985
14	4	Washer	A 10.5	DIN 125
15	2	Washer	10.5	DIN 9021



UM42-3

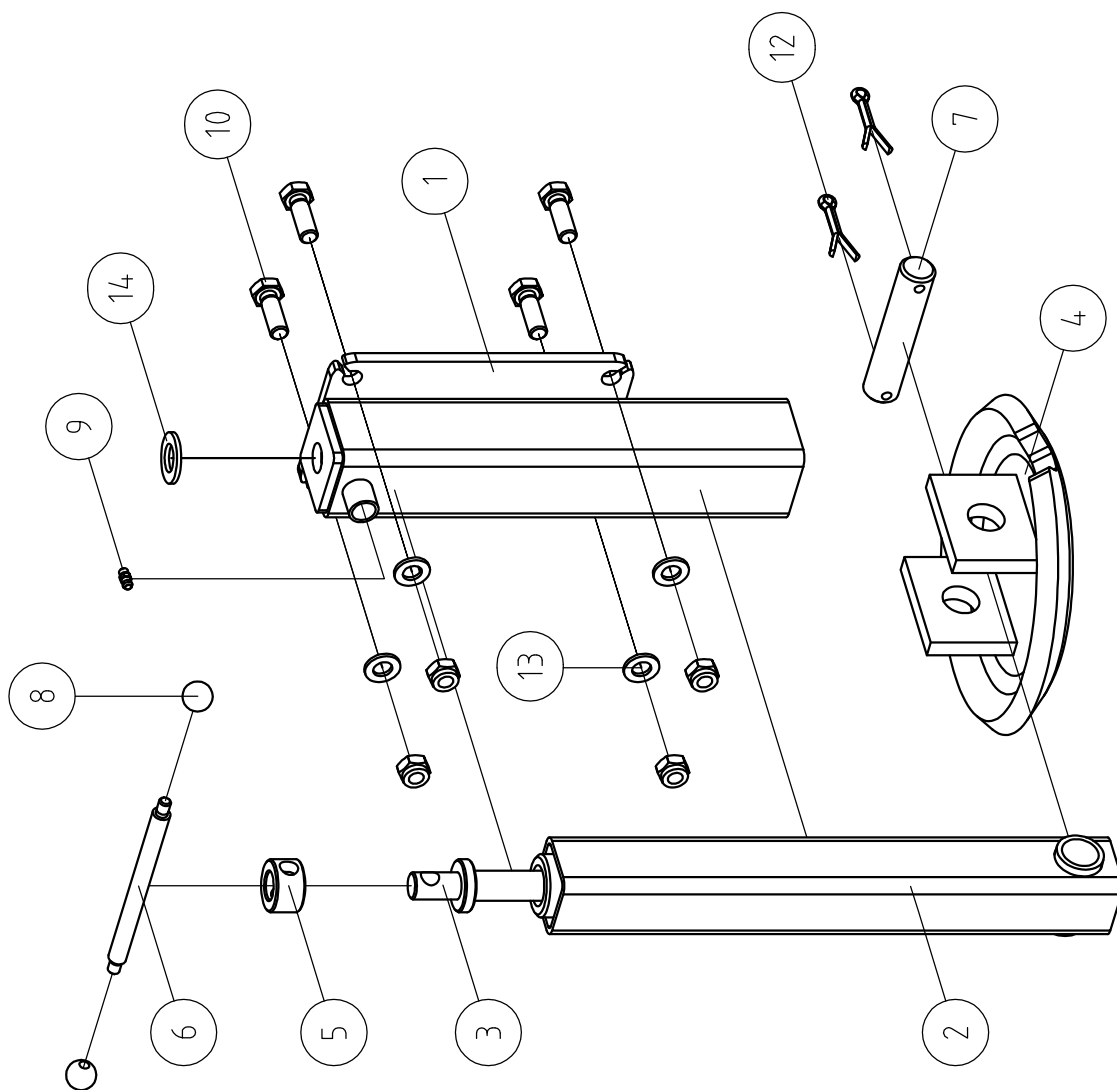
ITEM	QTY	DESCR	NAME	STANDARD
1	1		UM42.03.00.00B	
2	1		UM42.06.00.00A	
3	2		UM42-6	
4	1		UM42.11.00.00A	
5	1	Sheet 10	UM42.00.00.02	
6	2	Bolt M20x140	UM42.00.00.07	
7	2	Bolt M20x110	UM42.00.00.08	
8	1	Sheet 5	UM42.00.00.09	
9	1	Red round reflector	2121.01	ABKATI
10	1	White round reflector	2121.02	ABKATI
11	2	Bearing BRM 80	P5040	
12	2	Bearing BRM 80	P5020	
13	6	Grease nipple	AM 6	DIN 71412
14	3	Bolt	M16 X 45	SFS 2458
15	1	Bolt	M10 X 20	DIN 6921
16	1	Crosshead screw	M6 X 20	ISO 7045
17	1	Screw	M5 X 25 - 4.8 - H	ISO 7045
18	4	Nut	M20	DIN 985
19	3	Nut	M16	DIN 6926
20	1	Nut	M6	DIN 985
21	1	Nut	M5	DIN 985
22	4	Locking washer	A 21	DIN 6798
23	4	Washer	A 21	DIN 125
24	1	Washer	6.4	DIN 9021





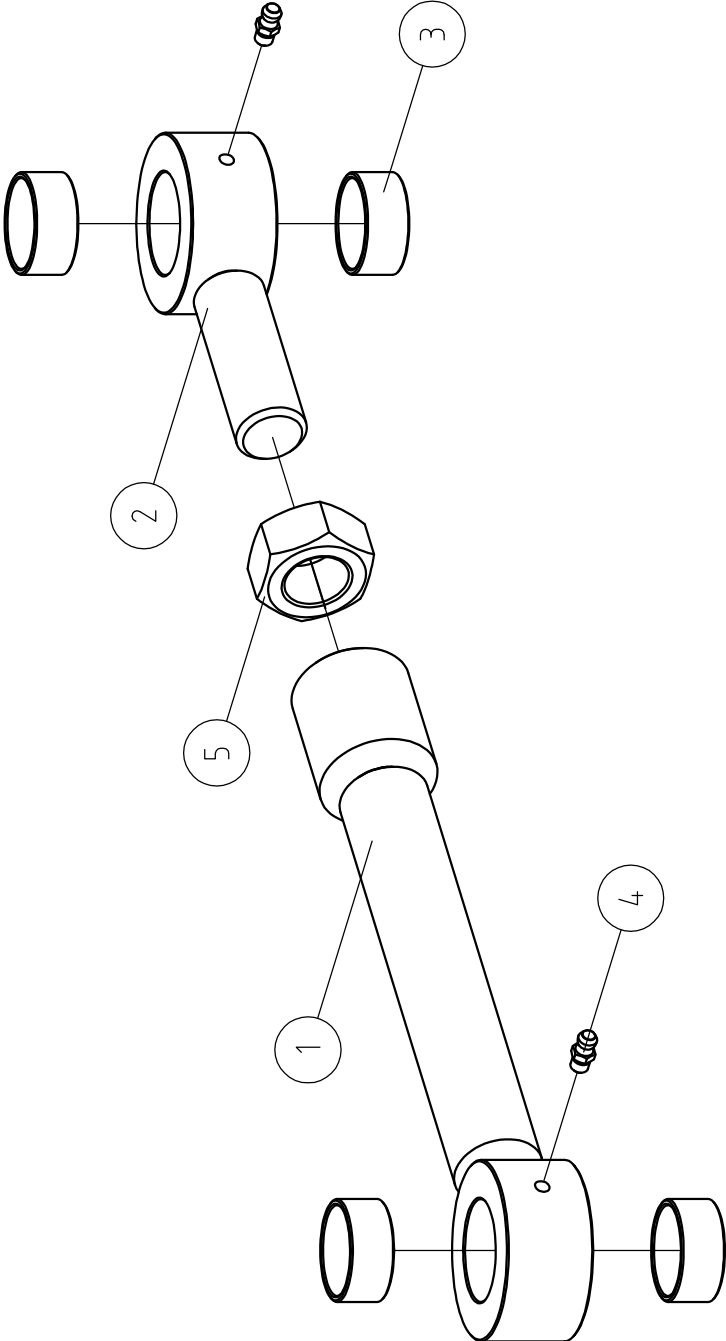
UM42-4

ITEM	QTY	DESCR	NAME	STANDARD
1	1		UM42.04.00.00B	
2	1		UM42.06.00.00A	
3	2		UM42-6	
4	1		UM42.11.00.00A	
5	1	Sheet 10	UM42.00.00.02	
6	2	Bolt M20x140	UM42.00.00.07	
7	2	Bolt M20x110	UM42.00.00.08	
8	1	Sheet 5	UM42.00.00.09	
9	1	Red round reflector	2121.01	ABKATI
10	1	White round reflector	2121.02	ABKATI
11	2	Bearing BRM 80	P5040	
12	2	Bearing BRM 80	P5020	
13	6	Grease nipple	AM 6	DIN 71412
14	3	Bolt	M16 X 45	SFS 2458
15	1	Bolt	M10 X 20	DIN 6921
16	1	Crosshead screw	M6 X 20	ISO 7045
17	1	Screw	M5 X 25 - 4.8 - H	ISO 7045
18	4	Nut	M20	DIN 985
19	3	Nut	M16	DIN 6926
20	1	Nut	M6	DIN 985
21	1	Nut	M5	DIN 985
22	4	Locking washer	A 21	DIN 6798
23	4	Washer	A 21	DIN 125
24	1	Washer	6.4	DIN 9021



## UM42-5

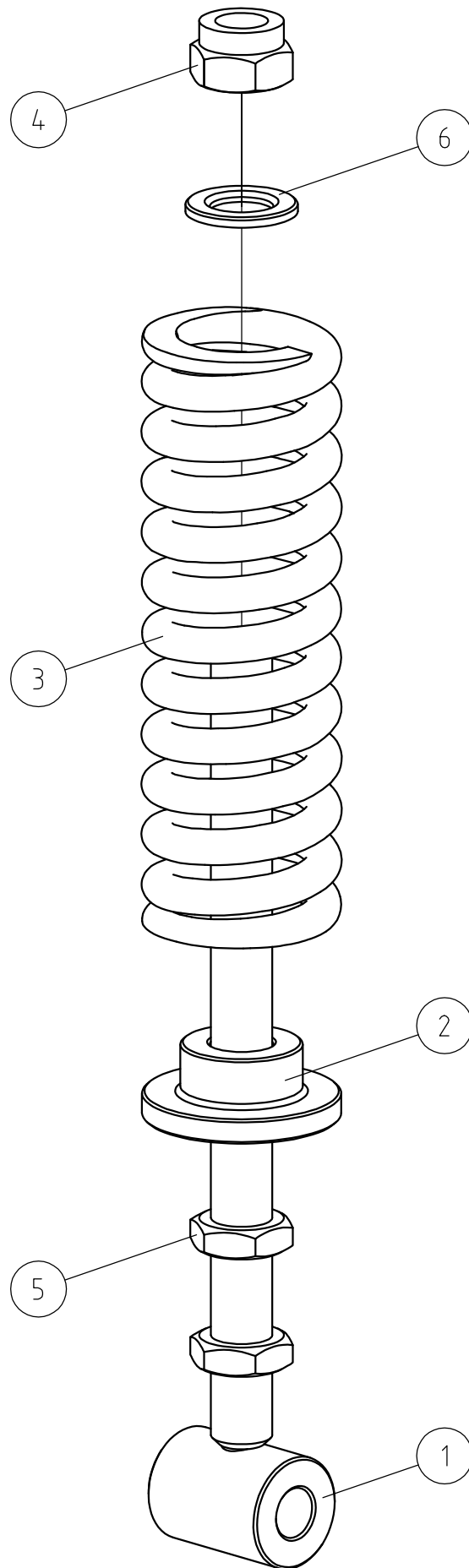
ITEM	QTY	DESCR	NAME	STANDARD
1	1		UM42.15.01.00	
2	1		VM32.07.02.00	
3	1		UM42.15.03.00B	
4	1		VM32.07.05.00	
5	1	Round ø35	UM42.15.00.01B	
6	1	Round ø12	UM42.15.00.02	
7	1	Round ø24	VM32.07.00.02	
8	2	Plastic	KKC20	
9	1	Grease nipple	AM 6	DIN 71412
10	4	Bolt	M12 X 35	DIN 933
11	4	Nut	M12	DIN 985
12	2	Linchpin	ø6.3 X 40	DIN 94
13	4	Washer	A 13	DIN 125
14	1	Washer	A 19	DIN 125



## UM42-6

ITEM	QTY	DESCR	NAME	STANDARD
1	1		UM42.16.01.00	
2	1		UM42.16.02.00	
3	4	Bearing BRM 80	P3015	
4	2	Grease nipple	AM 6	DIN 71412
5	1	Nut	M24 X 2	DIN 934

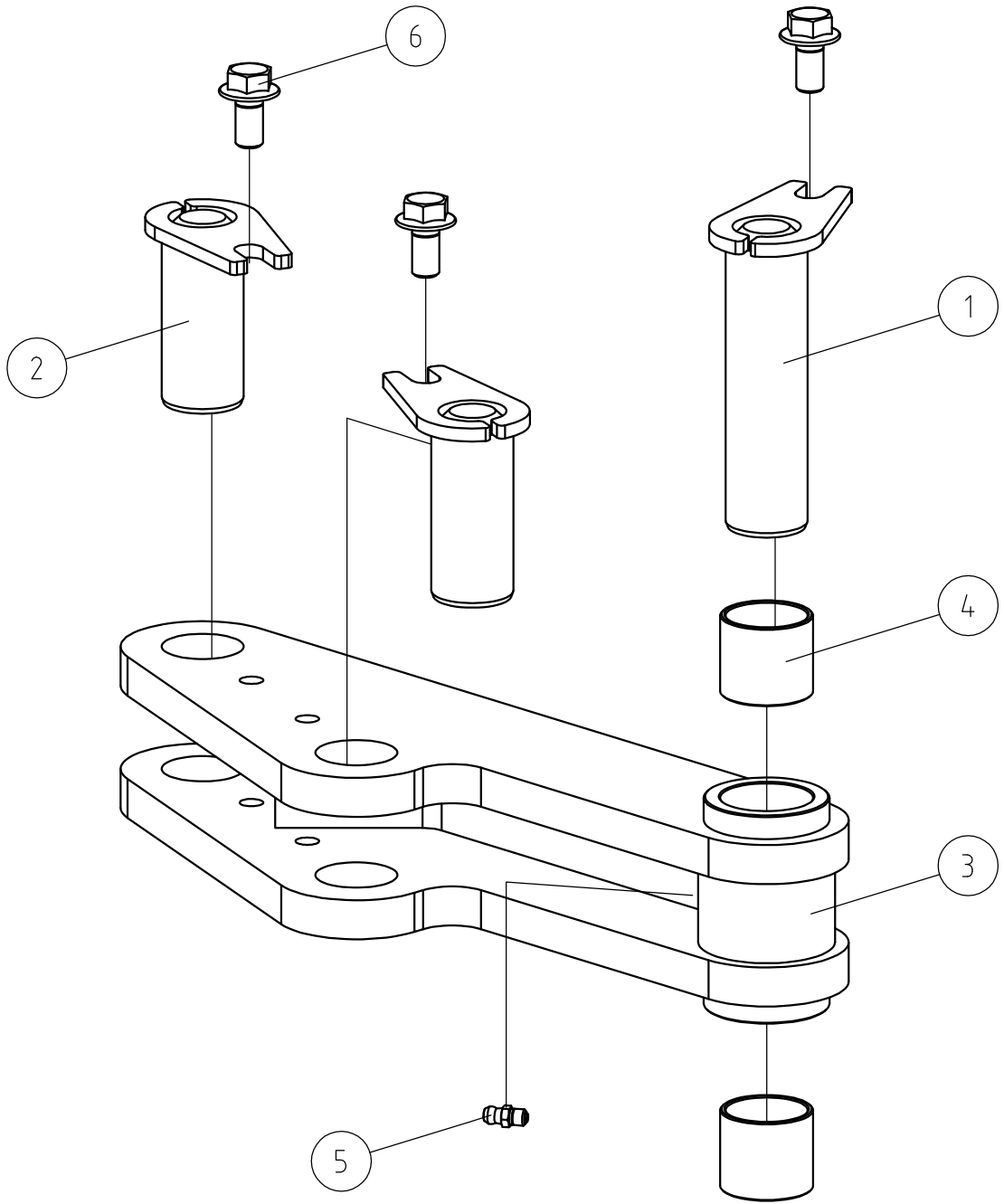
UM42-8



~~UM42-10~~---UM42-8

ITEM	QTY	DESCR	NAME	STANDARD
1	1		UM42.08.01.00	
2	1	Round $\phi$ 80	UM42.08.00.01	
3	1	Pressure spring	$\phi$ 14 X 50 (DI) X 250	LF 6929
4	1	Nut	M24	DIN 985
5	2	Nut	M24	DIN 439
6	1	Washer	25	DIN 6916

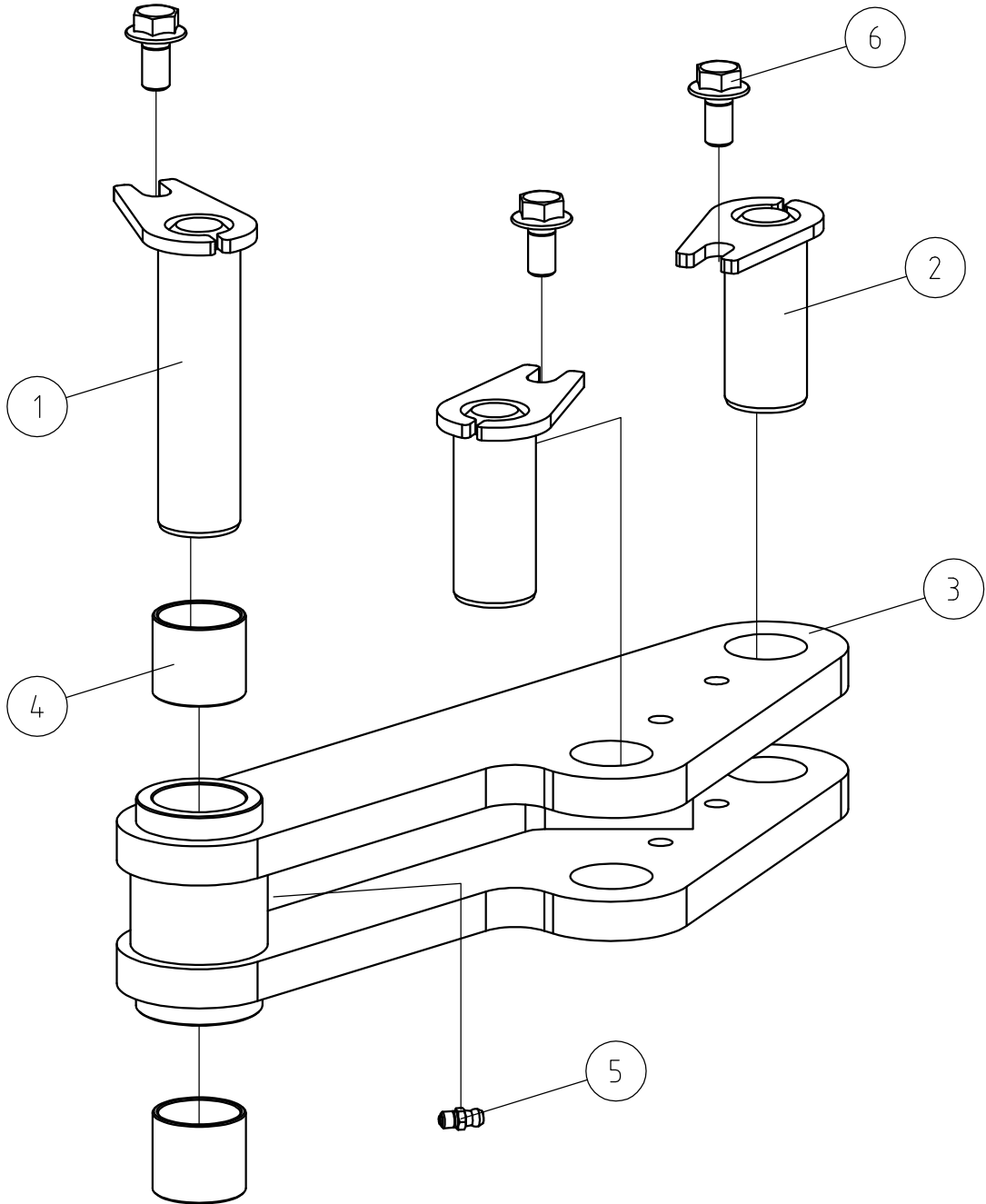




## UM42-9

ITEM	QTY	DESCR	NAME	STANDARD
1	1		UM42.10.00.00A	
2	2		UM42.11.00.00A	
3	1		UM42.13.00.00	
4	2	Bearing BRM 80	P3030	
5	1	Grease nipple	AM 6	DIN 71412
6	3	Bolt	M10 X 20	DIN 6921

UM42-10



## UM42-10

ITEM	QTY	DESCR	NAME	STANDARD
1	1		UM42.10.00.00A	
2	2		UM42.11.00.00A	
3	1		UM42.13.00.00	
4	2	Bearing BRM 80	P3030	
5	1	Grease nipple	AM 6	DIN 71412
6	3	Bolt	M10 X 20	DIN 6921