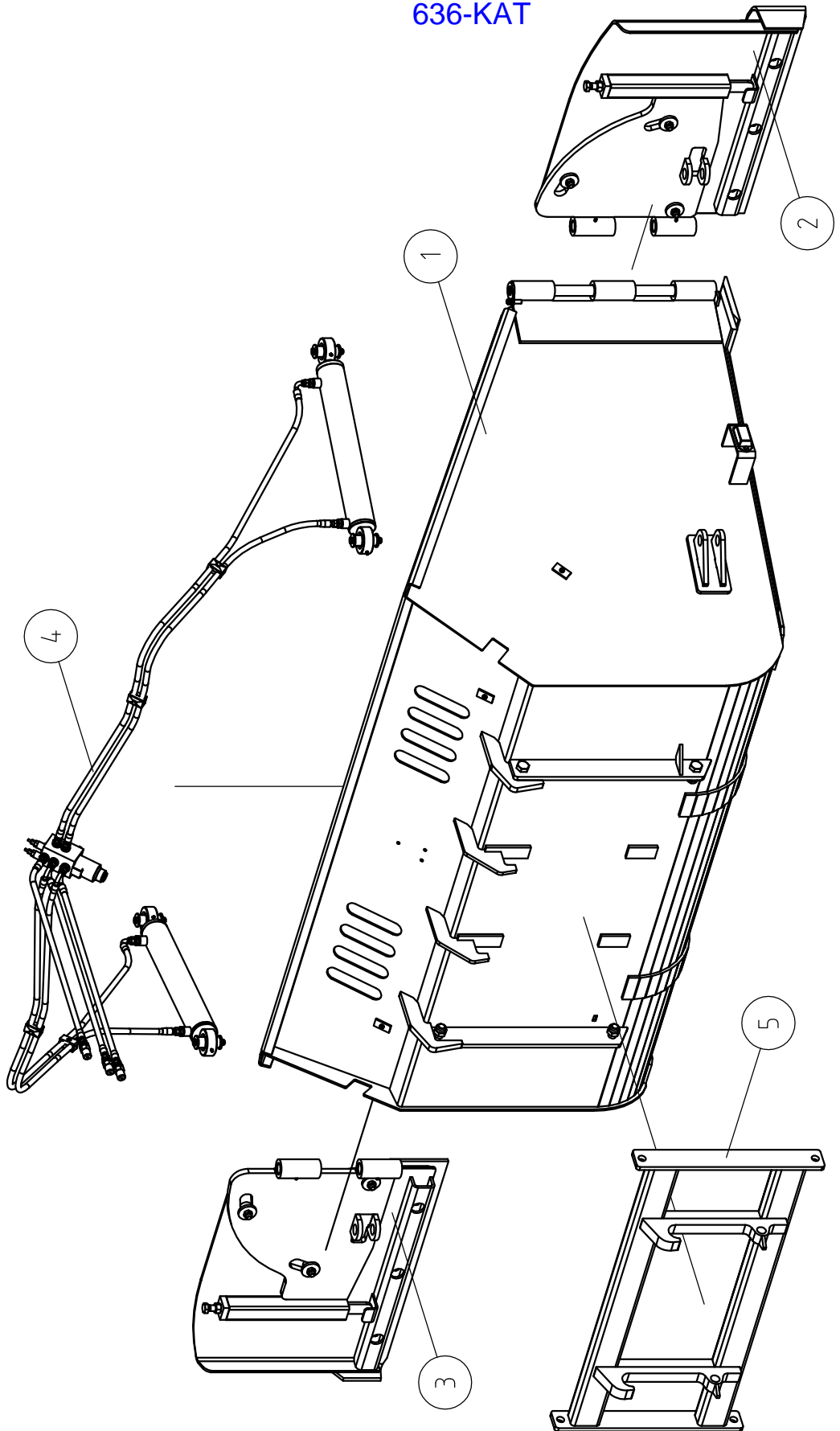


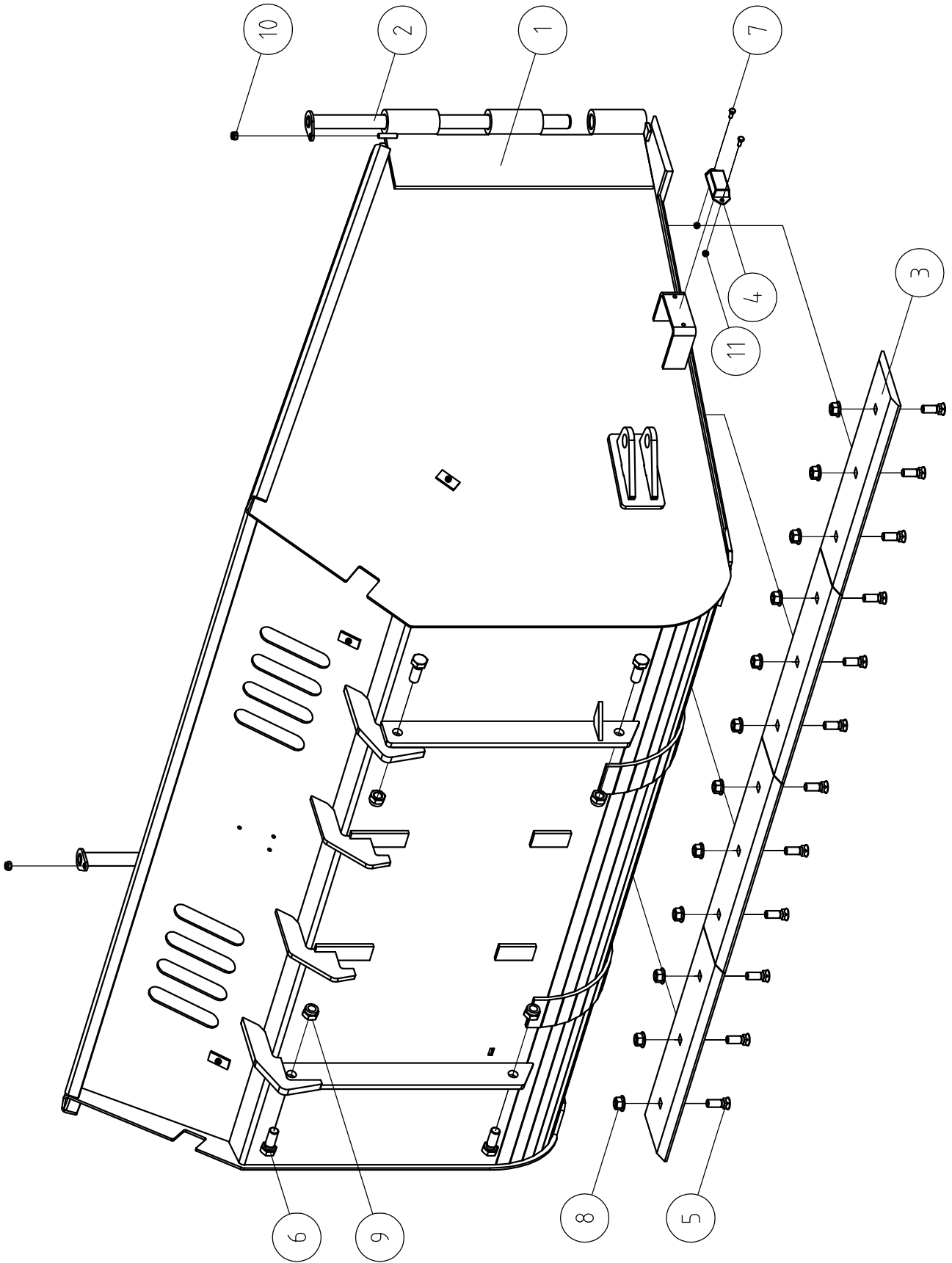
SAMI Flipper snow bucket 2600-4600

636-KAT

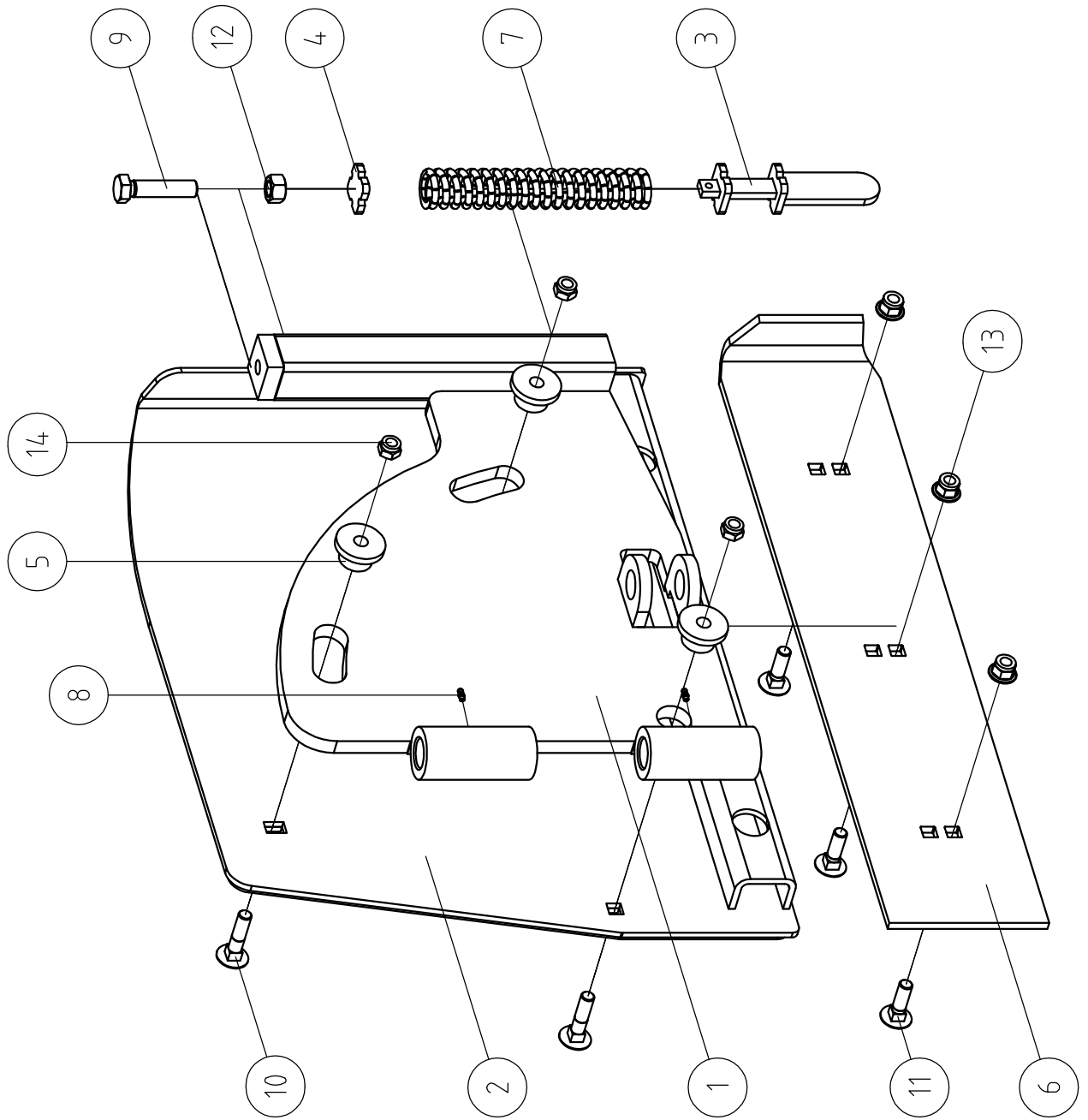


363-KAT

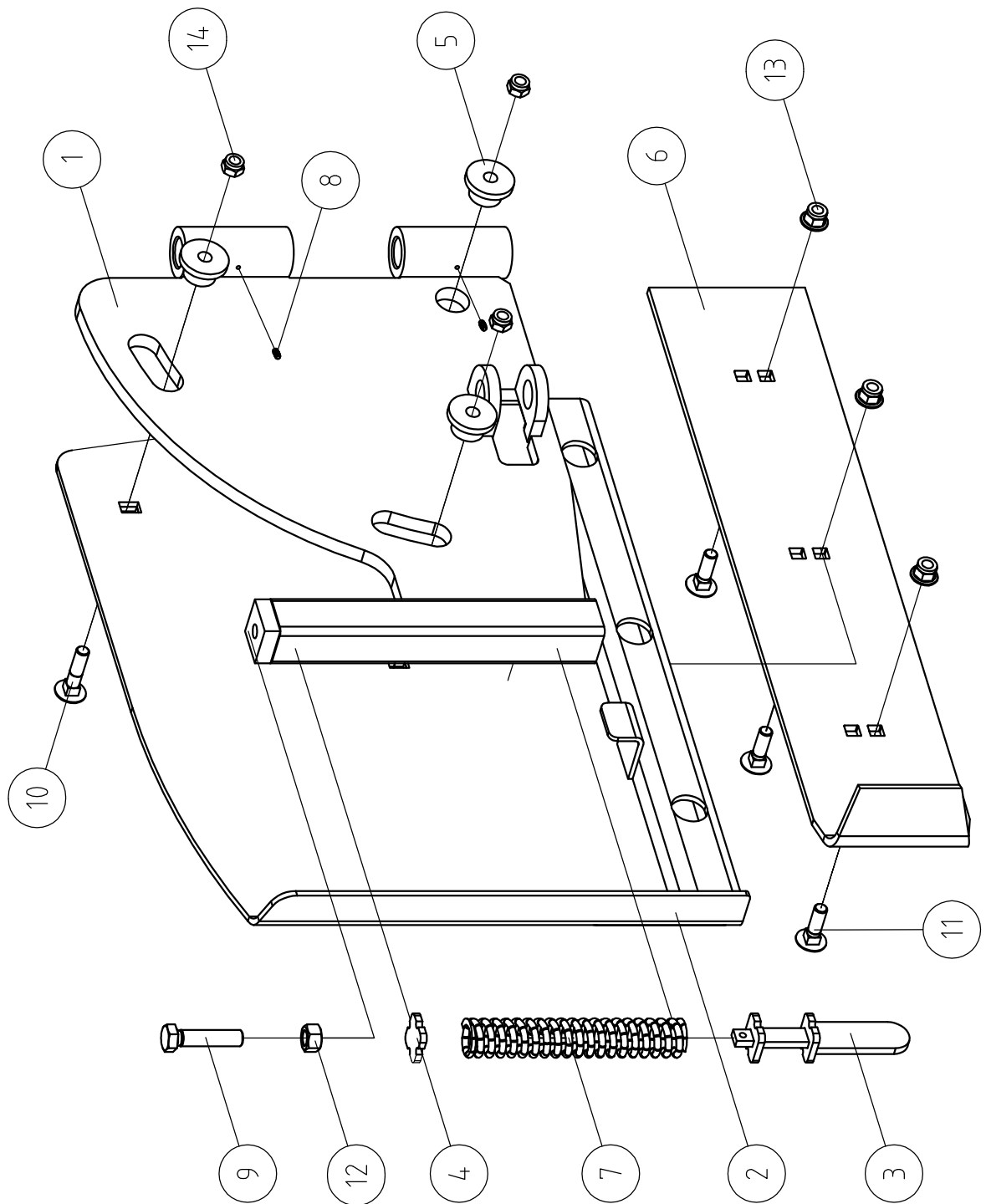
ITEM	QTY	DESCR	NAME	STANDARD
1	1	Bucket	363.000	
2	1	Right flipper set	363-2	
3	1	Left flipper set	363-3	
4	1	Hydraulic system	363-4	
5	1	Fastening SMS	363.810	



ITEM	QTY	DESCR	NAME	STANDARD
1	1	Corpus	363.100	
2	2	Axis	363 <del>354</del> .600	
3	4	Exchangeable edge	171-462380	Olofsfors
4	2	Rubber buffer	SC 25x46x126	AW-1050A
5	12	Cone ghead bolt	959-590400	ANSI B18.9
6	4	Bolt	M24 X 60	DIN 933
7	4	Bolt	M8 X 20	DIN 933
8	12	Nut	959-590380	IFI 100/107
9	4	Nut	M24	DIN 985
10	2	Nut	M12	DIN 985
11	4	Nut	M8	DIN 985



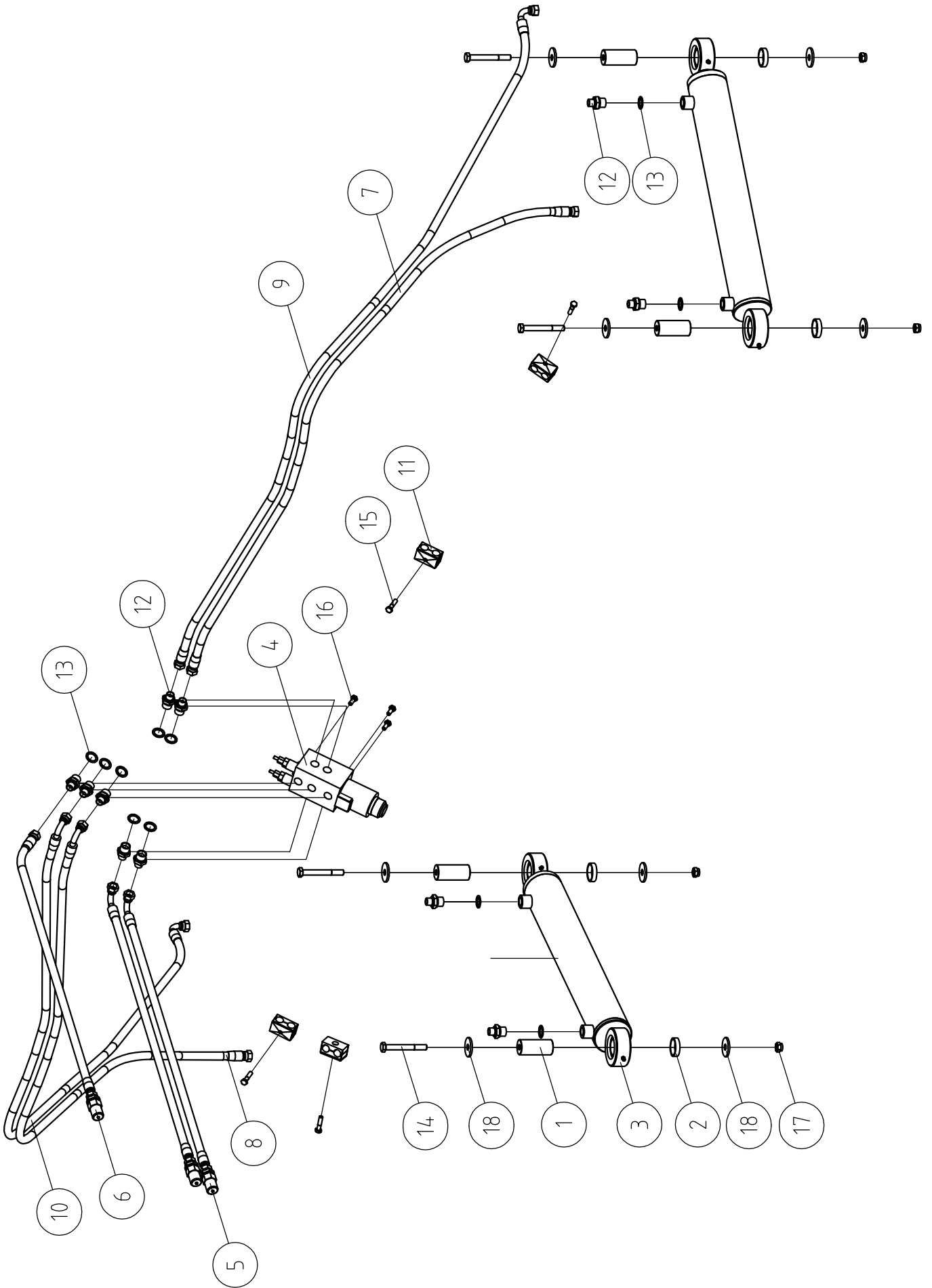
ITEM	QTY	DESCR	NAME	STANDARD
1	1	Flipper carrier (right)	363.200	
2	1	Side plate (right)	363.400	
3	1	Pusher	354.010	
4	1	Plate	354.001	
5	3	Bush	354.002	
6	1	Edge	122-460030	
7	1	Pressure spring	∅8X40X275	6308 <a href="#">206A0116</a>
8	2	Grease nipple	AM 6	DIN 71412
9	1	Bolt	M20 X 85	DIN 933
10	3	Convex head bolt	M16 X 70	DIN 603
11	3	Convex head bolt	M16 X 55	SFS 2458
12	1	Nut	M20	DIN 934
13	3	Nut	M16	DIN 6926
14	3	Nut	M16	DIN 985



ITEM	QTY	DESCR	NAME	STANDARD
1	1	Flipper carrier (left)	363.300	
2	1	Side plate (left)	363.500	
3	1	Pusher	354.010	
4	1	Plate	354.001	
5	3	Bush	354.002	
6	1	Edge	122-460030	
7	1	Pressure spring	∅8X40X275	6308 <a href="#">206A0116</a>
8	2	Grease nipple	AM 6	DIN 71412
9	1	Bolt	M20 X 85	DIN 933
10	3	Convex head bolt	M16 X 70	DIN 603
11	3	Convex head bolt	M16 X 55	SFS 2458
12	1	Nut	M20	DIN 934
13	3	Nut	M16	DIN 6926
14	3	Nut	M16	DIN 985



363-4



## 363-4

ITEM	QTY	DESCR	NAME	STANDARD
1	4	Finger	363.001	
2	4	Bush	363.002	
3	2	Hydraulic sylinder	HC80x40-500	
4	1	Hydraulic valve	E6212PV	
5	2	Hose	G 1/2 F - 3/8 90 IR	L-1500
6	1	Hose	G 1/2 F - 3/8 FS	L-1500
7	1	Hose	G 3/8 FS - 3/8 FS	L-2000
8	1	Hose	G 3/8 FS - 3/8 90 IR	L-2000
9	1	Hose	G 3/8 FS - 3/8 90 IR	L-2300
10	1	Hose	G 3/8 90 IR - 3/8 90 IR	L-2300
11	4	Double clamp set	DSP 18	
12	11	Adapter	G 1/2" - G 3/8"	
13	11	Hydraulic washer	G 1/2"	
14	4	Bolt	M12 X 100	DIN 931
15	4	Bolt	M8 X 35	DIN 931
16	3	Bolt	M8 X 20	DIN 933
17	4	Nut	M12	DIN 985
18	8	Washer	B 13.5	DIN 440