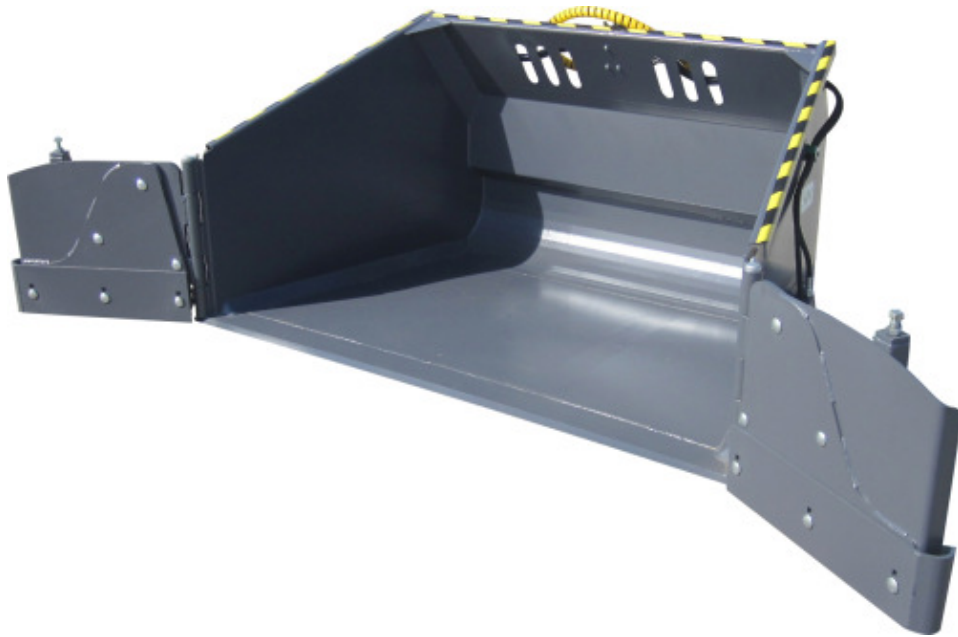




Operator's manual for flipper bucket



Manufacturer:

AS SAMI

Tule 20, Saue, Harjumaa 76505

www.sami.ee

Table of contents

| | |
|---|---|
| 1. Flipper bucket | 2 |
| 2. Introduction | 2 |
| 3. Contact data | 2 |
| 4. Intended purpose and working principle | 3 |
| 5. Safety instructions | 3 |
| 6. Technical specification | 4 |
| 7. Connection of hydraulic couplings..... | 4 |
| 8. Maintenance..... | 5 |
| 9. Warranty terms | 6 |

1. Flipper bucket

| <i>Product</i> | <i>Product number</i> | <i>Attachment</i> |
|--------------------------|-----------------------|-------------------|
| Flipper bucket 2600-4600 | 363.000.01 | SMS |
| | 363.000.02 | EURO |
| | 363.000.03 | SBM |
| Flipper bucket 2300-3750 | 354.000.01 | EURO |
| | 354.000.02 | SMS |
| Flipper bucket 2000-3450 | 359.000.01 | EURO |
| | 359.000.02 | SMS |
| Flipper bucket 1800-3000 | 346.000.01 | EURO |
| | 346.000.02 | SMS |

2. Introduction

Thank you for purchasing this attachment. We in SAMI AS hope that you will be satisfied with our product. This product is a result of AS SAMI's long experience in the design and manufacturing of various attachments. We ask that you read and understand the contents of this manual completely before operating the attachment. This will improve operating and maintenance efficiency, help avoid breakdowns and damage and extend your machine's service life. Do not hesitate to contact us for advice regarding service, parts or any problems relating to the operation of your attachment.

3. Contact data

For quick and accurate help in ordering spare parts and asking for additional information it is in need to tell data from machines label (serial number, model) to the seller.

Please write down the data from the label, so you can use the data in need.

Model: _____

Serial no.

Machine seller:

Address:

Phone:

4. Intended purpose and working principle

The flipper bucket is designed primarily for the collection and haulage of snow from sidewalks and various premises.

The bucket is equipped with hydraulically and individually operated side wings to increase the bucket width for snow catchment.

The standard equipment of the bucket includes an adjustable hydraulic safety valve to protect the bucket and the tractor in the case of hitting an obstacle.

5. Safety instructions

- Before using the attachment read the operator's manual of the tractor and of the attachment.
- Make sure that the attachment **locking pins lock** properly when coupling the attachment.
- Do not start operation if the attachment is not locked to the tractor.
- Start operation slowly and carefully.
- Always keep the attachment as low as possible to ensure maximum stability when operating.
- Before rotating the log grab make sure that there are no bystanders. Danger of crushing!
- Never go under the attachment, because even with the engine not working the front blade will be lowered down if the control lever of the lifting device is operated.
- Before using the attachment read the tractor's safety instructions as well.
- Make sure that the hydraulic hoses are coupled correctly and do not leak.
- For the time of transportation, stow the side wings (cylinder closed).
- Carriage of passengers in the bucket is **PROHIBITED!**



6. Technical specification

| | 2600-4600 | 2300-3750 | 2000-3450 | 1800-3000 | |
|----------------------|--|------------|------------|------------|----|
| Bucket width | 2600 | 2300 | 2000 | 1800 | mm |
| Bucket height | 1320 | 1055 | 940 | 800 | mm |
| Attachment max width | 4600 | 3750 | 3450 | 3000 | mm |
| Wing width | 927 | 725 | 725 | 725 | mm |
| Blades | Double blades. Olofsfors working blades are exchangeable, wing blades are exchangeable and adjustable. | Welded on | Welded on | Welded on | |
| Volume | 3500 | 1850 | 1200 | 730 | l |
| Fastening | Exchangeable EURO, SMS or SBM | EURO / SMS | EURO / SMS | EURO / SMS | |
| Weight | ca 1150 | 700 | 520 | 325 | kg |

The flipper bucket is equipped with hydraulically operated side wings which can be adjusted individually to facilitate snow collection. The bucket has a safety valve to allow the blade to tilt if it hits an obstacle.

7. Connection of hydraulic couplings

The flipper bucket has three hydraulic quick couplings, which should be attached to the corresponding couplings of the tractor. The connection of hoses determines the direction of movement of side wings when the control lever is operated. If it appears to you that the side wings move illogically, interchange the hose couplings.

Always observe the safety instructions in paragraph 3 when coupling the attachment.

Make sure that the hydraulic hoses **do not get overstretched** in any position of the attachment and **are not in a position** where they can **become entangled during the operation** of the machine and the attachment.

It is possible to buy and add pressure tank for flipper bucket (in case it is not installed in factory). To install pressure tank, as follows:

- Fix the tank to fastening (1).
- Remove the T hose (tank hose) from valve (2).
- Fasten the hose of pressure tank into T connection (2).

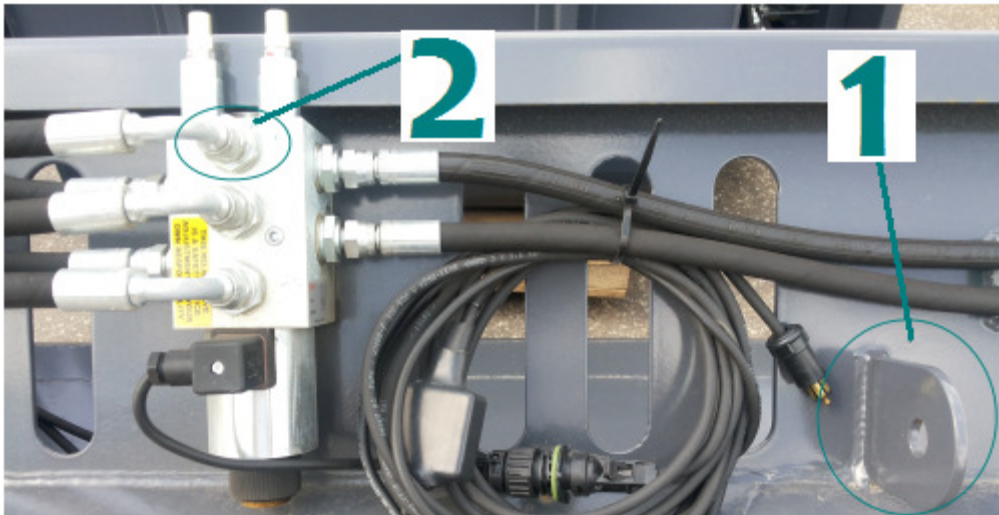


Illustration of how to install pressure tank.

8. Maintenance

- During the period of active use of the bucket it must be visually inspected on daily basis. If any plays or deformations or hydraulic oil leaks are detected, the defects must be eliminated immediately.
- The bucket has eight greasing points which must be greased twice a week or as necessary during the active period of use. **(See below)**
- Before servicing the hydraulic system make sure that it is not pressurised.



When replacing hydraulic hoses:

- make sure that the hose is not pressurised
- make sure that the hoses are not twisted
- do not tighten then coupling nut excessively
- do not use locking or sealing agents
- use proper wrenches

Replace a hydraulic hose, if:

- the hose is loose from its coupling
- the hose leaks
- the surface layer has worn down to reinforcement fabric
- the hose is permanently deformed
- the hose shows signs of burning
- there are less than 5 years left of the hose's service life as prescribed by its manufacturer



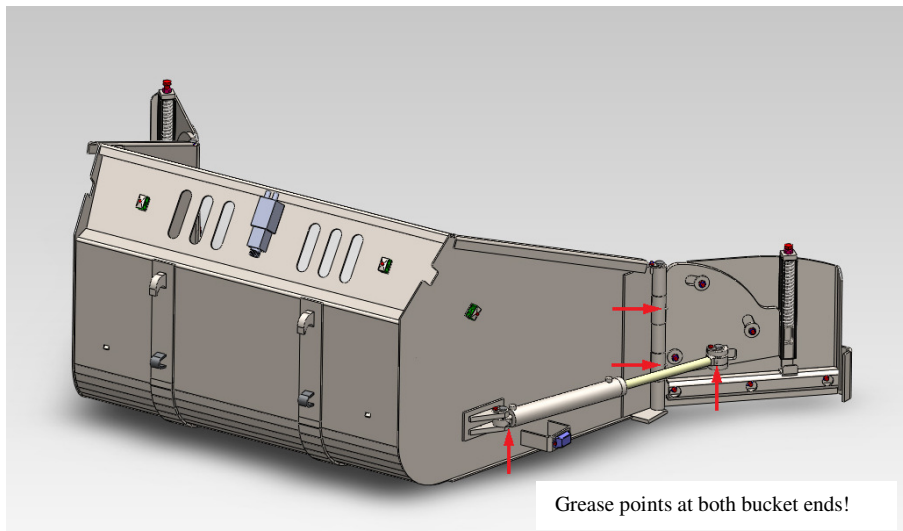
Keep away from oils and lubricants!

Oils and lubricants may contain additives which are harmful to human body.

Respect the following safety requirements when handling these substances:

- always use special clothing, oilproof gloves and hand protection creams
- avoid skin contact with oil or lubricant
- do not use oil for cleaning hands
- change oily clothes for clean ones as soon as possible
- oil mist or oil spillage may cause danger of slipping
- waste oils must be collected and disposed of in accordance with local regulations

Grease points:



9. Warranty terms

Warranty for SAMI products is valid 12 months from the date of purchase.

- Material and manufacturing defects that occur during the warranty period are covered by the warranty.
- **When a defect occurs, please contact authorised distributor.**
- Please send to distributor serial number and/or year of manufacture of the product (see the manufacturer's data plate) together with photos, videos and detailed description of the defect. Description must include photos of product label, of problematic part and of device in general.
- Distributor communicates the producer and informs the client about made decision.
- In need distributor may ask from the client to send additional information or defected part.
- All warranty cases **accepted by SAMI AS** will be compensated by producer.
- The manufacturer either repairs or replaces or compensates the defective parts.
- Sub-contracted part's warranty is provided by their manufacturer.

The warranty excludes:

- Consumables (e.g. blades, etc)
- Downtime or any other consequential loss or damage
- Transport costs (travel and freight costs)
- Overtime pay or mission allowances

- Any damage caused by operation in a negligent manner or exceeding the approved specifications detailed in this manual is excluded.

The warranty excludes damage resulting from:

- Negligent or improper use of the product.
- Failure to observe the operating and maintenance requirements set by the manufacturer.
- Normal wear and tear.
- Abnormal operating conditions.
- Overloading or use for other non-intended purposes.
- Lack of maintenance and checks.
- Repair works which are below standard.
- Failure due to use of incorrect oil or lubricants, contamination of the oil, or which has served its normal life.
- Hoses which have suffered external damage.
- Using other than SAMI original spare parts and equipment.
- Long storage time (e.g. paint defects or corrosion).
- The manufacturer does not accept any responsibility for interruption of work or any other consequential loss resulting from any failure of the product.

All warranty terms apply only to a new product purchased from a distributor authorized by AS SAMI. The warranty does not apply to a resold product.

CONTACTS OF MANUFACTURER:



AS SAMI

Tule 20, Saue, 76505 Harjumaa
ESTONIA

Tel. +372 670 9040
Faks +372 670 9039
e-mail: sami@sami.ee
www.sami.ee