

## Flipper snow bucket 2300HD and 2600HD

SAMI flipper bucket family has grown. Now “Heavy Duty” flipper buckets for loaders (also for bigger tractors) are available.

To meet user’s expectations, new flipper buckets are higher but similar in size and attachable to loaders with SBM fastening.

These snow buckets are durable devices for the collection and haulage of snow from large squares and premises. Strong hydraulically

operated side wings can be controlled independently. Side wings can be placed on curb stones. They move up 145 mm. Safety valve protects the bucket and tractor (or loader) from damage then hitting an obstacle.

Flipper buckets have special bolt on double-blade system below the bucket.

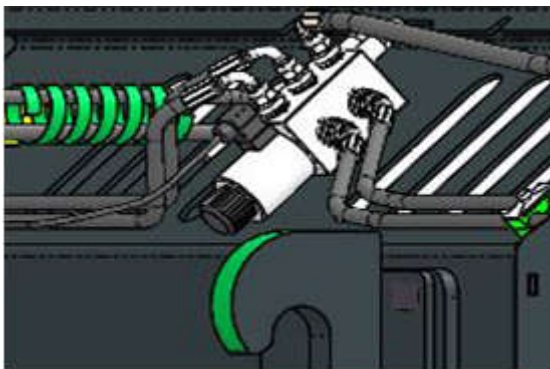
All SAMI flipper buckets are equipped with accumulation tank(s). It makes the work even more comfortable, because wings will move back to last position after hitting an obstacle.

Double hydraulic outlet is in standard, but it is also possible to order HD flipper bucket models with 1 hose pair.

In major snow conditions using flipper snow bucket gives the best result with shorter time.



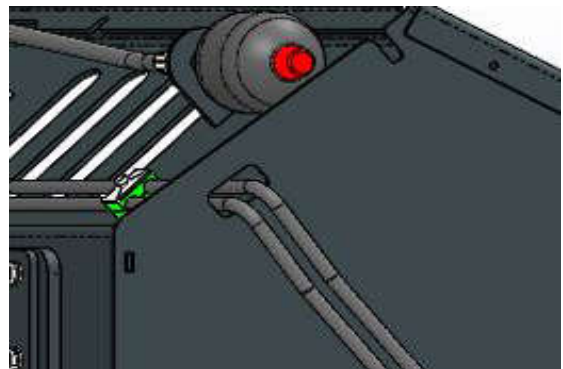
Technical data	NEW! 2300HD	NEW! 2600HD	
Working width	2280-3780	2750-4740	mm
Height	1250	1250	mm
Length	1530	1560	mm
Wing width	850	995	mm
Volume	2200	2600	l
Extension volume	400	600	l
Weight of standard equipment	850	980	kg
½" quick connection	2 or 4 hoses		pc
Blade	Double blade system		
Extra blades	Net blades in standard. Solid blades are optional.		
Fastening (product code)	Fastening frame Zettelmeyer (78.840), EURO (78.750), SBM (78.820), blank (78.790) etc.		
Product code with 4 hoses set	457.000.HS1	474.000.HS1	
Product code with 2 hoses set	457.000.HS2	474.000.HS2	



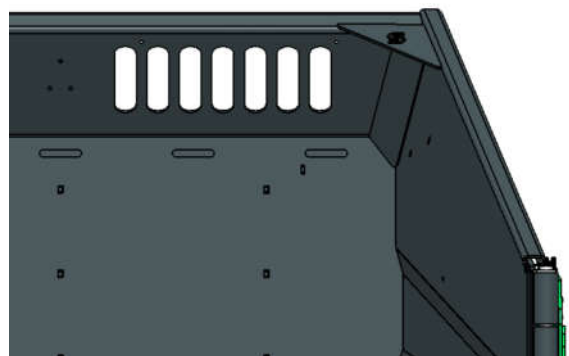
Valve(s) protects the bucket and tractor (or loader) from damage then hitting an obstacle.

When having 1 hoses pair (1 valve and 1 accumulation tank), when in standard there is 12 V solenoid fastened to valve. As option it is possible to buy 24 V solenoid. Electric switch and wire to vehicle cabin are in standard as well.

When having 2 hoses pairs then 2 valves and 2 accumulation tanks are in set.



Accumulation tank(s) help(s) in moving wings back to last position after hitting an obstacle. It is in standard set.

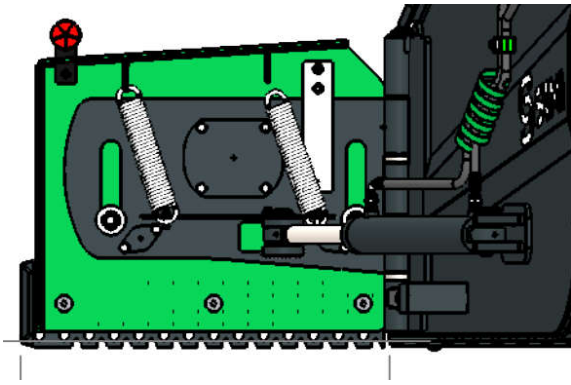


It is easy to see inside bucket by the help of holes in buckets upper back wall and evaluate buckets fulfilment during work.

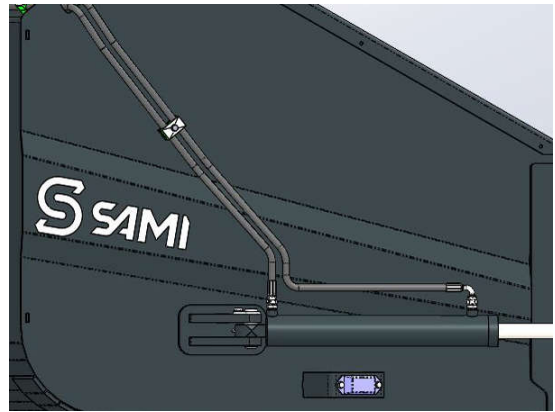


AS SAMI  
Tule 20, 76505 Saue  
Harjumaa, Estonia

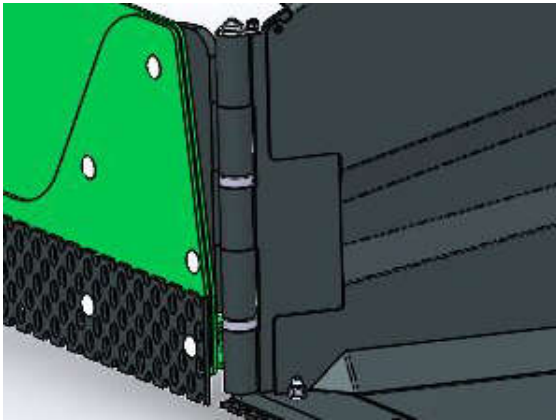
Phone: +372 670 9040  
sami@sami.ee  
www.sami.ee



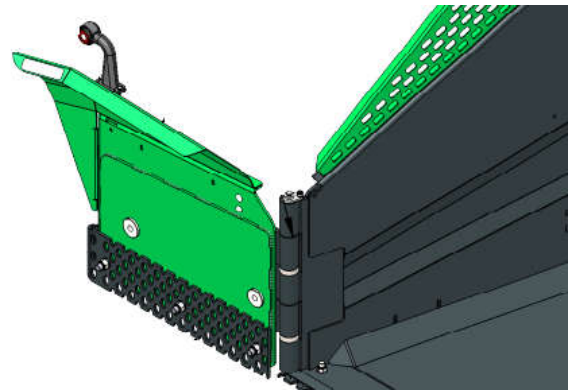
Side wings can be placed on curb stones. They move up 145 mm. That makes collecting of snow easier from narrow streets with sidewalks. Wing reflectors are in standard and LED lights are optional.



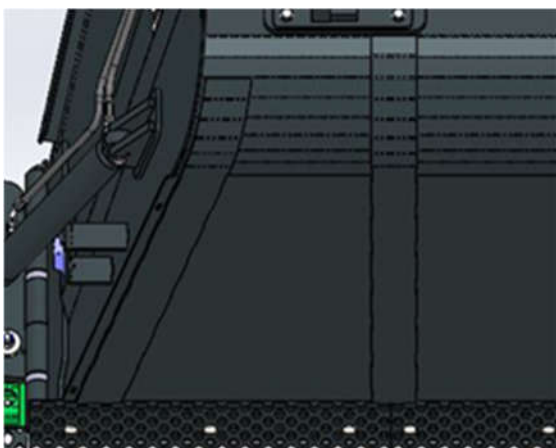
Bucket sides are of bended sheet metal, to give more strength.



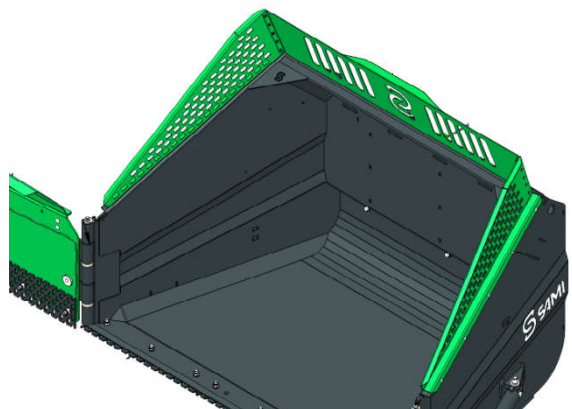
Wing height can be changed according to the blade type.



Wing extension is available as extra.



Strong bucket. Metal ribs below bucket help in gaining best durability.



Bucket extension is available as extra.

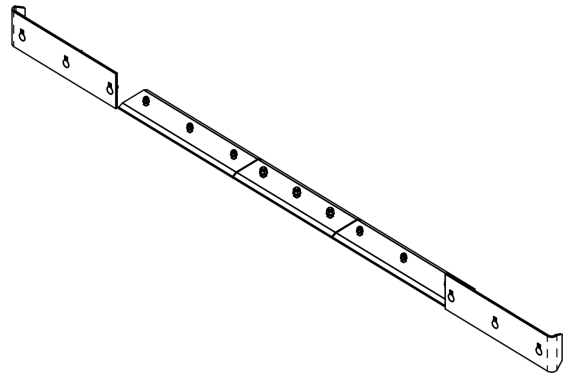


AS SAMI  
Tule 20, 76505 Saue  
Harjumaa, Estonia

Phone: +372 670 9040  
sami@sami.ee  
www.sami.ee



Fastening frames can be changed easily. This flipper bucket is available for all most common front loaders for large vehicles.



Net blades are in standard. Solid blades are available as extra.



AS SAMI  
Tule 20, 76505 Saue  
Harjumaa, Estonia

Phone: +372 670 9040  
sami@sami.ee  
www.sami.ee